



MARH8 rabbit pAb

Cat No.:ES9629

For research use only

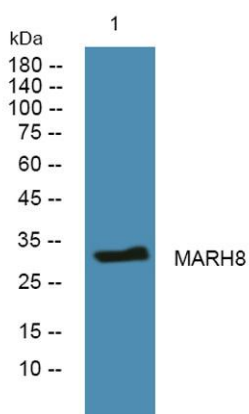
Overview

Product Name	MARH8 rabbit pAb
Host species	Rabbit
Applications	WB;ELISA
Species Cross-Reactivity	Human;Rat;Mouse;
Recommended dilutions	WB 1:500-2000 ELISA 1:5000-20000
Immunogen	Synthesized peptide derived from part region of human protein
Specificity	MARH8 Polyclonal Antibody detects endogenous levels of protein.
Formulation	Liquid in PBS containing 50% glycerol, 0.5% BSA and 0.02% sodium azide.
Storage	Store at -20°C. Avoid repeated freeze-thaw cycles.
Protein Name	E3 ubiquitin-protein ligase MARCH8 (EC 6.3.2.-) (Cellular modulator of immune recognition) (c-MIR) (Membrane-associated RING finger protein 8) (Membrane-associated RING-CH protein VIII) (MARCH-VIII) (
Gene Name	MARCH8 MIR RNF178
Cellular localization	Cytoplasmic vesicle membrane ; Multi-pass membrane protein . Lysosome membrane ; Multi-pass membrane protein . Early endosome membrane ; Multi-pass membrane protein .
Purification	The antibody was affinity-purified from rabbit antiserum by affinity-chromatography using epitope-specific immunogen.
Clonality	Polyclonal
Concentration	1 mg/ml
Observed band	32kD
Human Gene ID	220972
Human Swiss-Prot Number	Q5T0T0
Alternative Names	
Background	MARCH8 is a member of the MARCH family of membrane-bound E3 ubiquitin ligases (EC 6.3.2.19).





MARCH enzymes add ubiquitin (see MIM 191339) to target lysines in substrate proteins, thereby signaling their vesicular transport between membrane compartments. MARCH8 induces the internalization of several membrane glycoproteins (Goto et al., 2003 [PubMed 12582153]; Bartee et al., 2004 [PubMed 14722266]).[supplied by OMIM, Apr 2010],



Western blot analysis of lysates from SW480 cells, primary antibody was diluted at 1:1000, 4° over night

