

RPC10 rabbit pAb

Cat No.:ES9608

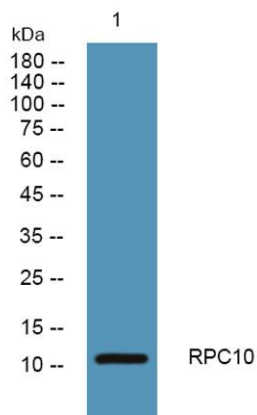
For research use only

Overview

Product Name	RPC10 rabbit pAb
Host species	Rabbit
Applications	WB;ELISA
Species Cross-Reactivity	Human;Mouse
Recommended dilutions	WB 1:500-2000 ELISA 1:5000-20000
Immunogen	Synthesized peptide derived from part region of human protein AA range: 51-100
Specificity	RPC10 Polyclonal Antibody detects endogenous levels of protein.
Formulation	Liquid in PBS containing 50% glycerol, 0.5% BSA and 0.02% sodium azide.
Storage	Store at -20°C. Avoid repeated freeze-thaw cycles.
Protein Name	DNA-directed RNA polymerase III subunit RPC10 (RNA polymerase III subunit C10) (DNA-directed RNA polymerase III subunit K) (RNA polymerase III 12.5 kDa subunit) (RPC12.5) (RNA polymerase III subunit C
Gene Name	POLR3K RPC11 My010
Cellular localization	Nucleus, nucleolus .
Purification	The antibody was affinity-purified from rabbit antiserum by affinity-chromatography using epitope-specific immunogen.
Clonality	Polyclonal
Concentration	1 mg/ml
Observed band	11kD
Human Gene ID	51728
Human Swiss-Prot Number	Q9Y2Y1
Alternative Names	
Background	This gene encodes a small essential subunit of RNA polymerase III, the polymerase responsible for synthesizing transfer and small ribosomal RNAs in eukaryotes. The carboxy-terminal domain of this subunit shares a high degree of sequence similarity



to the carboxy-terminal domain of an RNA polymerase II elongation factor. This similarity in sequence is supported by functional studies showing that this subunit is required for proper pausing and termination during transcription. Pseudogenes of this gene are found on chromosomes 13 and 17.[provided by RefSeq, Jul 2010],



Western blot analysis of lysates from Jarkat cells, primary antibody was diluted at 1:1000, 4°over night

