



# CLD12 rabbit pAb

Cat No.:ES9546

For research use only

## Overview

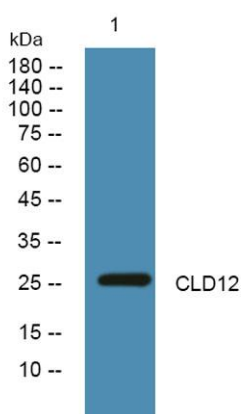
<b>Product Name</b>	CLD12 rabbit pAb
<b>Host species</b>	Rabbit
<b>Applications</b>	WB;ELISA
<b>Species Cross-Reactivity</b>	Human;Mouse
<b>Recommended dilutions</b>	WB 1:500-2000 ELISA 1:5000-20000
<b>Immunogen</b>	Synthesized peptide derived from part region of human protein
<b>Specificity</b>	CLD12 Polyclonal Antibody detects endogenous levels of protein.
<b>Formulation</b>	Liquid in PBS containing 50% glycerol, 0.5% BSA and 0.02% sodium azide.
<b>Storage</b>	Store at -20°C. Avoid repeated freeze-thaw cycles.
<b>Protein Name</b>	Claudin-12
<b>Gene Name</b>	CLDN12
<b>Cellular localization</b>	Cell junction, tight junction. Cell membrane ; Multi-pass membrane protein .
<b>Purification</b>	The antibody was affinity-purified from rabbit antiserum by affinity-chromatography using epitope-specific immunogen.
<b>Clonality</b>	Polyclonal
<b>Concentration</b>	1 mg/ml
<b>Observed band</b>	26kD
<b>Human Gene ID</b>	9069
<b>Human Swiss-Prot Number</b>	P56749
<b>Alternative Names</b>	
<b>Background</b>	This gene encodes a member of the claudin family. Claudins are integral membrane proteins and components of tight junction strands. Tight junction strands serve as a physical barrier to prevent solutes and water from passing freely through the paracellular space between epithelial or endothelial cell sheets, and also play critical roles in maintaining cell polarity and signal transductions. This gene is





**ELK Biotechnology**

expressed in the inner ear and bladder epithelium, and it is over-expressed in colorectal carcinomas. This protein and claudin 2 are critical for vitamin D-dependent Ca<sup>2+</sup> absorption between enterocytes. Multiple alternatively spliced transcript variants encoding the same protein have been found.[provided by RefSeq, Sep 2011],



Western blot analysis of lysates from U2OS cells, primary antibody was diluted at 1:1000, 4° over night



+86-27-59760950

[ELKbio@ELKbiotech.com](mailto:ELKbio@ELKbiotech.com)

[www.elkbiotech.com](http://www.elkbiotech.com)

23-2, No.388 Gaoxin 2nd Road, Wuhan East Lake Hi-tech Development Zone, Hubei, P.R.C