



CHD8 rabbit pAb

Cat No.:ES9540

For research use only

Overview

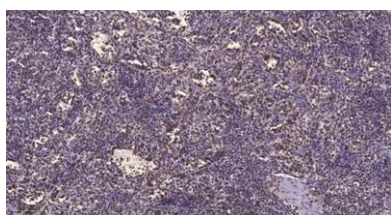
| | |
|---------------------------------|--|
| Product Name | CHD8 rabbit pAb |
| Host species | Rabbit |
| Applications | IHC;IF |
| Species Cross-Reactivity | Human;Rat;Mouse; |
| Recommended dilutions | IHC-p 1:50-300 |
| Immunogen | Synthesized peptide derived from part region of human protein |
| Specificity | CHD8 Polyclonal Antibody detects endogenous levels of protein. |
| Formulation | Liquid in PBS containing 50% glycerol, 0.5% BSA and 0.02% sodium azide. |
| Storage | Store at -20°C. Avoid repeated freeze-thaw cycles. |
| Protein Name | Chromodomain-helicase-DNA-binding protein 8 (CHD-8) (EC 3.6.4.12) (ATP-dependent helicase CHD8) (Helicase with SNF2 domain 1) |
| Gene Name | CHD8 HELSNF1 KIAA1564 |
| Cellular localization | Nucleus . Localizes to the promoter regions of several CTNNB1-responsive genes. Also present at known CTCF target sites. . |
| Purification | The antibody was affinity-purified from rabbit antiserum by affinity-chromatography using epitope-specific immunogen. |
| Clonality | Polyclonal |
| Concentration | 1 mg/ml |
| Observed band | 283kD |
| Human Gene ID | 57680 |
| Human Swiss-Prot Number | Q9HCK8 |
| Alternative Names | |
| Background | This gene encodes a DNA helicase that functions as a transcription repressor by remodeling chromatin structure. It binds beta-catenin and negatively regulates Wnt signaling pathway, which plays a pivotal role in vertebrate early development and |





morphogenesis. Mice lacking this gene exhibit early embryonic death. Alternatively spliced transcript variants encoding different isoforms have been found for this gene. [provided by RefSeq, May 2010],

Immunohistochemical analysis of paraffin-embedded human spleen. 1, Tris-EDTA, pH9.0 was used for antigen retrieval. 2 Antibody was diluted at 1:200(4° overnight).3,Secondary antibody was diluted at 1:200(room temperature, 45min).



Western Blot analysis of various, using primary antibody at 1:1000 dilution. Secondary antibody(catalog#:RS23920) was diluted at 1:10000

