

CHSTE rabbit pAb

Cat No.:ES9495

For research use only

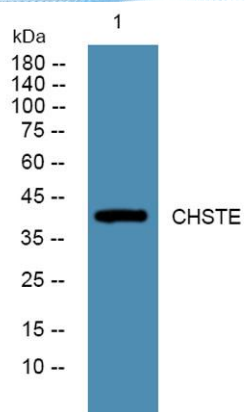
Overview

Product Name	CHSTE rabbit pAb
Host species	Rabbit
Applications	WB;ELISA
Species Cross-Reactivity	Human;Mouse
Recommended dilutions	WB 1:500-2000 ELISA 1:5000-20000
Immunogen	Synthesized peptide derived from part region of human protein
Specificity	CHSTE Polyclonal Antibody detects endogenous levels of protein.
Formulation	Liquid in PBS containing 50% glycerol, 0.5% BSA and 0.02% sodium azide.
Storage	Store at -20°C. Avoid repeated freeze-thaw cycles.
Protein Name	Carbohydrate sulfotransferase 14 (EC 2.8.2.35) (Dermatan 4-sulfotransferase 1) (D4ST-1) (hD4ST1)
Gene Name	CHST14 D4ST1 UNQ1925/PRO4400
Cellular localization	Golgi apparatus membrane ; Single-pass type II membrane protein .
Purification	The antibody was affinity-purified from rabbit antiserum by affinity-chromatography using epitope-specific immunogen.
Clonality	Polyclonal
Concentration	1 mg/ml
Observed band	41kD
Human Gene ID	113189
Human Swiss-Prot Number	Q8NCHO
Alternative Names	
Background	This gene encodes a member of the HNK-1 family of sulfotransferases. The encoded protein transfers sulfate to the C-4 hydroxyl of N-acetylgalactosamine residues in dermatan sulfate. Mutations in this gene have been associated with adducted thumb-clubfoot syndrome.[provided by RefSeq, Mar 2010],





ELK Biotechnology



Western blot analysis of lysates from Jarkat cells, primary antibody was diluted at 1:1000, 4° over night



+86-27-59760950

ELKbio@ELKbiotech.com

www.elkbiotech.com

23-2, No.388 Gaoxin 2nd Road, Wuhan East Lake Hi-tech Development Zone, Hubei, P.R.C.