



# CABP4 rabbit pAb

Cat No.:ES9473

For research use only

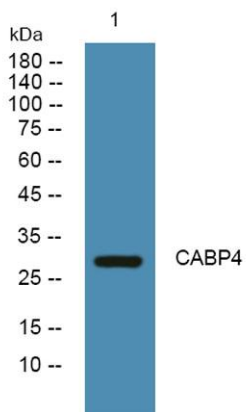
## Overview

<b>Product Name</b>	CABP4 rabbit pAb
<b>Host species</b>	Rabbit
<b>Applications</b>	WB;ELISA
<b>Species Cross-Reactivity</b>	Human;Mouse
<b>Recommended dilutions</b>	WB 1:500-2000 ELISA 1:5000-20000
<b>Immunogen</b>	Synthesized peptide derived from part region of human protein
<b>Specificity</b>	CABP4 Polyclonal Antibody detects endogenous levels of protein.
<b>Formulation</b>	Liquid in PBS containing 50% glycerol, 0.5% BSA and 0.02% sodium azide.
<b>Storage</b>	Store at -20°C. Avoid repeated freeze-thaw cycles.
<b>Protein Name</b>	Calcium-binding protein 4 (CaBP4)
<b>Gene Name</b>	CABP4
<b>Cellular localization</b>	Cytoplasm . Cell junction, synapse, presynapse . Found in rod spherules and cone pedicles of the presynapses from both types of photoreceptors. .
<b>Purification</b>	The antibody was affinity-purified from rabbit antiserum by affinity-chromatography using epitope-specific immunogen.
<b>Clonality</b>	Polyclonal
<b>Concentration</b>	1 mg/ml
<b>Observed band</b>	30kD
<b>Human Gene ID</b>	57010
<b>Human Swiss-Prot Number</b>	P57796
<b>Alternative Names</b>	
<b>Background</b>	This gene encodes a member of the CABP family of calcium binding protein characterized by four EF-hand motifs. Mutations in this gene are associated with congenital stationary night blindness type 2B. Three transcript variants encoding two different isoforms have been found for this gene. [provided by RefSeq, Jul 2014],





**ELK Biotechnology**



Western blot analysis of lysates from K562 cells, primary antibody was diluted at 1:1000, 4° over night



+86-27-59760950

ELKbio@ELKbiotech.com

www.elkbiotech.com

23-2, No.388 Gaoxin 2nd Road, Wuhan East Lake Hi-tech Development Zone, Hubei, P.R.C