



# CHERP rabbit pAb

Cat No.:ES9464

For research use only

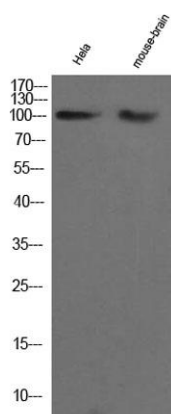
## Overview

Product Name	CHERP rabbit pAb
Host species	Rabbit
Applications	WB;ELISA
Species Cross-Reactivity	Human;Mouse
Recommended dilutions	WB 1:500-2000 ELISA 1:5000-20000
Immunogen	Synthesized peptide derived from part region of human protein
Specificity	CHERP Polyclonal Antibody detects endogenous levels of protein.
Formulation	Liquid in PBS containing 50% glycerol, 0.5% BSA and 0.02% sodium azide.
Storage	Store at -20°C. Avoid repeated freeze-thaw cycles.
Protein Name	Calcium homeostasis endoplasmic reticulum protein (ERPROT 213-21) (SR-related CTD-associated factor 6)
Gene Name	CHERP DAN26 SCAF6
Cellular localization	Cytoplasm . Cytoplasm, perinuclear region . Endoplasmic reticulum . Distributed throughout the cytoplasm and also localizes to the perinuclear region of both human erythroleukemia (HEL) cells and Jurkat cells. Colocalizes with ITPR1. .
Purification	The antibody was affinity-purified from rabbit antiserum by affinity-chromatography using epitope-specific immunogen.
Clonality	Polyclonal
Concentration	1 mg/ml
Observed band	100kD
Human Gene ID	10523
Human Swiss-Prot Number	Q8IWX8
Alternative Names	
Background	function:Involved in calcium homeostasis, growth and proliferation.,sequence caution:Translation N-terminally shortened.,similarity:Contains 1 CID





domain.,similarity:Contains 1 G-patch  
domain.,similarity:Contains 1 SURP motif  
repeat.,subcellular location:Distributed throughout  
the cytoplasm and also localizes to the perinuclear  
region of both human erythroleukemia (HEL) cells  
and Jurkat cells. Colocalizes with ITPR1.,tissue  
specificity:Expressed in brain, placenta, lung, liver,  
kidney, pancreas, cardiac and skeletal muscle, and in  
cultured HEL and Dami cells.,



Western Blot analysis of hela and mouse brain cell lysis.  
Primary Antibody was diluted at 1:1000. Secondary  
antibody(catalog#:RS23920 was diluted at 1:10000

