



BRI3 rabbit pAb

Cat No.:ES9458

For research use only

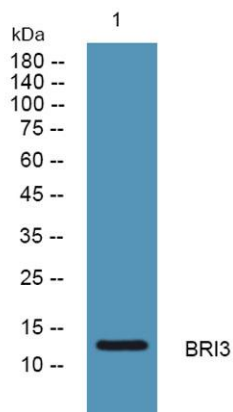
Overview

Product Name	BRI3 rabbit pAb
Host species	Rabbit
Applications	WB;ELISA
Species Cross-Reactivity	Human;Mouse;Rat
Recommended dilutions	WB 1:500-2000 ELISA 1:5000-20000
Immunogen	Synthesized peptide derived from part region of human protein
Specificity	BRI3 Polyclonal Antibody detects endogenous levels of protein.
Formulation	Liquid in PBS containing 50% glycerol, 0.5% BSA and 0.02% sodium azide.
Storage	Store at -20°C. Avoid repeated freeze-thaw cycles.
Protein Name	Brain protein I3 (pRGR2)
Gene Name	BRI3
Cellular localization	Lysosome membrane ; Multi-pass membrane protein . ; [Isoform 1]: Cytoplasm, perinuclear region . Co-localizes with MGAT1 and IFITM3 at the perinuclear region. . ; [Isoform 2]: Cytoplasm . Nucleus . Diffuse localization in the cytoplasm and nucleus. .
Purification	The antibody was affinity-purified from rabbit antiserum by affinity-chromatography using epitope-specific immunogen.
Clonality	Polyclonal
Concentration	1 mg/ml
Observed band	13kD
Human Gene ID	25798
Human Swiss-Prot Number	O95415
Alternative Names	
Background	similarity:Belongs to the BRI3 family.,





ELK Biotechnology



Western blot analysis of lysates from U2OS cells, primary antibody was diluted at 1:1000, 4° over night



+86-27-59760950

ELKbio@ELKbiotech.com

www.elkbiotech.com

23-2, No.388 Gaoxin 2nd Road, Wuhan East Lake Hi-tech Development Zone, Hubei, P.R.C.