



ARF5 rabbit pAb

Cat No.:ES9366

For research use only

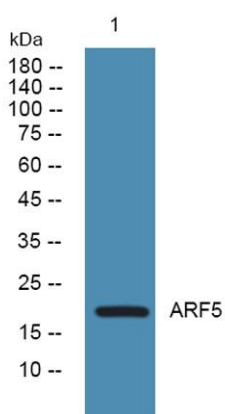
Overview

Product Name	ARF5 rabbit pAb
Host species	Rabbit
Applications	WB;ELISA
Species Cross-Reactivity	Human;Mouse;Rat
Recommended dilutions	WB 1:500-2000 ELISA 1:5000-20000
Immunogen	Synthesized peptide derived from human protein . at AA range: 40-120
Specificity	ARF5 Polyclonal Antibody detects endogenous levels of protein.
Formulation	Liquid in PBS containing 50% glycerol, 0.5% BSA and 0.02% sodium azide.
Storage	Store at -20°C. Avoid repeated freeze-thaw cycles.
Protein Name	ADP-ribosylation factor 5
Gene Name	ARF5
Cellular localization	Golgi apparatus . Cytoplasm, perinuclear region . Membrane ; Lipid-anchor . Golgi apparatus, trans-Golgi network membrane ; Lipid-anchor .
Purification	The antibody was affinity-purified from rabbit antiserum by affinity-chromatography using epitope-specific immunogen.
Clonality	Polyclonal
Concentration	1 mg/ml
Observed band	19kD
Human Gene ID	381
Human Swiss-Prot Number	P84085
Alternative Names	
Background	ADP ribosylation factor 5(ARF5) Homo sapiens This gene is a member of the human ADP-ribosylation factor (ARF) gene family. These genes encode small guanine nucleotide-binding proteins that stimulate the ADP-ribosyltransferase activity of cholera toxin and play a role in vesicular trafficking and as activators of phospholipase D. The





gene products include 6 ARF proteins and 11 ARF-like proteins and constitute 1 family of the RAS superfamily. The ARF proteins are categorized as class I (ARF1, ARF2, and ARF3), class II (ARF4 and ARF5) and class III (ARF6). The members of each class share a common gene organization. [provided by RefSeq, Dec 2010],



Western blot analysis of lysates from HCT116 cells,
primary antibody was diluted at 1:1000, 4° over night

