



# PLCA rabbit pAb

Cat No.:ES9286

For research use only

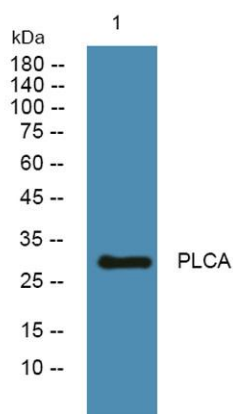
## Overview

<b>Product Name</b>	PLCA rabbit pAb
<b>Host species</b>	Rabbit
<b>Applications</b>	WB;ELISA
<b>Species Cross-Reactivity</b>	Human;Mouse
<b>Recommended dilutions</b>	WB 1:500-2000 ELISA 1:5000-20000
<b>Immunogen</b>	Synthesized peptide derived from human protein . at AA range: 150-230
<b>Specificity</b>	PLCA Polyclonal Antibody detects endogenous levels of protein.
<b>Formulation</b>	Liquid in PBS containing 50% glycerol, 0.5% BSA and 0.02% sodium azide.
<b>Storage</b>	Store at -20°C. Avoid repeated freeze-thaw cycles.
<b>Protein Name</b>	1-acyl-sn-glycerol-3-phosphate acyltransferase alpha (EC 2.3.1.51) (1-acylglycerol-3-phosphate O-acyltransferase 1) (1-AGP acyltransferase 1) (1-AGPAT 1) (Lysophosphatidic acid acyltransferase alpha)
<b>Gene Name</b>	AGPAT1 G15
<b>Cellular localization</b>	Endoplasmic reticulum membrane ; Multi-pass membrane protein .
<b>Purification</b>	The antibody was affinity-purified from rabbit antiserum by affinity-chromatography using epitope-specific immunogen.
<b>Clonality</b>	Polyclonal
<b>Concentration</b>	1 mg/ml
<b>Observed band</b>	31kD
<b>Human Gene ID</b>	10554
<b>Human Swiss-Prot Number</b>	Q99943
<b>Alternative Names</b>	
<b>Background</b>	This gene encodes an enzyme that converts lysophosphatidic acid (LPA) into phosphatidic acid (PA). LPA and PA are two phospholipids involved in signal transduction and in lipid biosynthesis in cells.





This enzyme localizes to the endoplasmic reticulum. This gene is located in the class III region of the human major histocompatibility complex. Alternative splicing results in two transcript variants encoding the same protein. [provided by RefSeq, Jul 2008],



Western blot analysis of lysates from PC12 cells, primary antibody was diluted at 1:1000, 4° over night

