



# CR3L4 rabbit pAb

Cat No.:ES9265

For research use only

## Overview

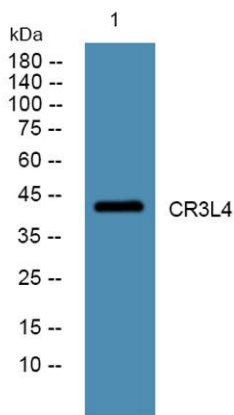
<b>Product Name</b>	CR3L4 rabbit pAb
<b>Host species</b>	Rabbit
<b>Applications</b>	WB;ELISA
<b>Species Cross-Reactivity</b>	Human;Mouse;Rat
<b>Recommended dilutions</b>	WB 1:500-2000 ELISA 1:5000-20000
<b>Immunogen</b>	Synthesized peptide derived from human protein . at AA range: 200-280
<b>Specificity</b>	CR3L4 Polyclonal Antibody detects endogenous levels of protein.
<b>Formulation</b>	Liquid in PBS containing 50% glycerol, 0.5% BSA and 0.02% sodium azide.
<b>Storage</b>	Store at -20°C. Avoid repeated freeze-thaw cycles.
<b>Protein Name</b>	Cyclic AMP-responsive element-binding protein 3-like protein 4 (cAMP-responsive element-binding protein 3-like protein 4) (Androgen-induced basic leucine zipper protein) (AlbZIP) (Attaching to CRE-lik CREB3L4 AIBZIP CREB4 JAL
<b>Gene Name</b>	
<b>Cellular localization</b>	Endoplasmic reticulum membrane; Single-pass type II membrane protein. Golgi apparatus membrane ; Single-pass type II membrane protein . May also be located in Golgi apparatus.; [Processed cyclic AMP-responsive element-binding protein 3-like protein 4]: Nu
<b>Purification</b>	The antibody was affinity-purified from rabbit antiserum by affinity-chromatography using epitope-specific immunogen.
<b>Clonality</b>	Polyclonal
<b>Concentration</b>	1 mg/ml
<b>Observed band</b>	43kD
<b>Human Gene ID</b>	148327
<b>Human Swiss-Prot Number</b>	Q8TEY5
<b>Alternative Names</b>	
<b>Background</b>	This gene encodes a CREB (cAMP responsive





**ELK Biotechnology**

element binding) protein with a transmembrane domain which localizes it to the ER membrane. The encoded protein is a transcriptional activator which contains a dimerization domain, and this protein may function in a number of processing pathways including protein processing. Multiple transcript variants encoding different isoforms have been found for this gene. [provided by RefSeq, Dec 2011],



Western blot analysis of lysates from A431 cells, primary antibody was diluted at 1:1000, 4° over night



+86-27-59760950

[ELKbio@ELKbiotech.com](mailto:ELKbio@ELKbiotech.com)

[www.elkbiotech.com](http://www.elkbiotech.com)

23-2, No.388 Gaoxin 2nd Road, Wuhan East Lake Hi-tech Development Zone, Hubei, P.R.C