



# IKBL1 rabbit pAb

Cat No.:ES9261

For research use only

## Overview

<b>Product Name</b>	IKBL1 rabbit pAb
<b>Host species</b>	Rabbit
<b>Applications</b>	WB;ELISA
<b>Species Cross-Reactivity</b>	Human;Mouse;Rat
<b>Recommended dilutions</b>	WB 1:500-2000 ELISA 1:5000-20000
<b>Immunogen</b>	Synthesized peptide derived from human protein . at AA range: 70-150
<b>Specificity</b>	IKBL1 Polyclonal Antibody detects endogenous levels of protein.
<b>Formulation</b>	Liquid in PBS containing 50% glycerol, 0.5% BSA and 0.02% sodium azide.
<b>Storage</b>	Store at -20°C. Avoid repeated freeze-thaw cycles.
<b>Protein Name</b>	NF-kappa-B inhibitor-like protein 1 (Inhibitor of kappa B-like protein) (I-kappa-B-like protein) (IkappaBL) (Nuclear factor of kappa light polypeptide gene enhancer in B-cells inhibitor-like 1)
<b>Gene Name</b>	NFKBIL1 IKBL
<b>Cellular localization</b>	Nucleus . Nuclear localization with a speckled expression pattern in some cells. Colocalizes with CACTIN in the nucleus.
<b>Purification</b>	The antibody was affinity-purified from rabbit antiserum by affinity-chromatography using epitope-specific immunogen.
<b>Clonality</b>	Polyclonal
<b>Concentration</b>	1 mg/ml
<b>Observed band</b>	41kD
<b>Human Gene ID</b>	4795
<b>Human Swiss-Prot Number</b>	Q9UBC1
<b>Alternative Names</b>	
<b>Background</b>	This gene encodes a divergent member of the I-kappa-B family of proteins. Its function has not been determined. The gene lies within the major

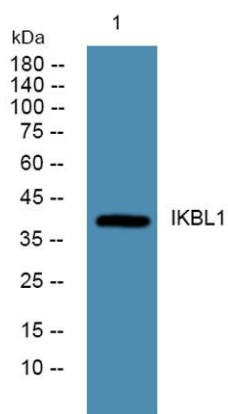




**ELK Biotechnology**

histocompatibility complex (MHC) class I region on chromosome 6. Multiple transcript variants encoding different isoforms have been found for this gene. [provided by RefSeq, Jan 2009],

Western blot analysis of lysates from HCT116 cells,  
primary antibody was diluted at 1:1000, 4° over night



+86-27-59760950

[ELKbio@ELKbiotech.com](mailto:ELKbio@ELKbiotech.com)

[www.elkbiotech.com](http://www.elkbiotech.com)

23-2, No.388 Gaoxin 2nd Road, Wuhan East Lake Hi-tech Development Zone, Hubei, P.R.C