



WNT7A rabbit pAb

Cat No.:ES9233

For research use only

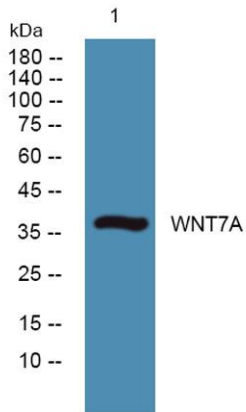
Overview

Product Name	WNT7A rabbit pAb
Host species	Rabbit
Applications	WB;ELISA
Species Cross-Reactivity	Human;Mouse
Recommended dilutions	WB 1:500-2000 ELISA 1:5000-20000
Immunogen	Synthesized peptide derived from human protein . at AA range: 110-190
Specificity	WNT7A Polyclonal Antibody detects endogenous levels of protein.
Formulation	Liquid in PBS containing 50% glycerol, 0.5% BSA and 0.02% sodium azide.
Storage	Store at -20°C. Avoid repeated freeze-thaw cycles.
Protein Name	Protein Wnt-7a
Gene Name	WNT7A
Cellular localization	Secreted, extracellular space, extracellular matrix . Secreted .
Purification	The antibody was affinity-purified from rabbit antiserum by affinity-chromatography using epitope-specific immunogen.
Clonality	Polyclonal
Concentration	1 mg/ml
Observed band	38kD
Human Gene ID	7476
Human Swiss-Prot Number	O00755
Alternative Names	
Background	This gene is a member of the WNT gene family, which consists of structurally related genes that encode secreted signaling proteins. These proteins have been implicated in oncogenesis and in several developmental processes, including regulation of cell fate and patterning during embryogenesis. This gene is involved in the development of the anterior-posterior axis in the female reproductive





tract, and also plays a critical role in uterine smooth muscle patterning and maintenance of adult uterine function. Mutations in this gene are associated with Fuhrmann and Al-Awadi/Raas-Rothschild/Schinzel phocomelia syndromes. [provided by RefSeq, Jul 2008],



Western blot analysis of lysates from A431 cells, primary antibody was diluted at 1:1000, 4° over night

