



# PDD2L rabbit pAb

Cat No.:ES9221

For research use only

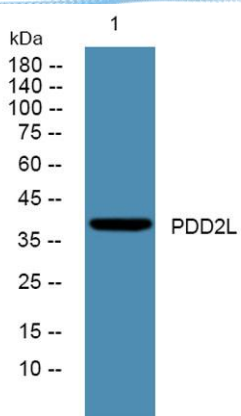
## Overview

<b>Product Name</b>	PDD2L rabbit pAb
<b>Host species</b>	Rabbit
<b>Applications</b>	WB;ELISA
<b>Species Cross-Reactivity</b>	Human;Rat;Mouse;
<b>Recommended dilutions</b>	WB 1:500-2000 ELISA 1:5000-20000
<b>Immunogen</b>	Synthesized peptide derived from human protein . at AA range: 180-260
<b>Specificity</b>	PDD2L Polyclonal Antibody detects endogenous levels of protein.
<b>Formulation</b>	Liquid in PBS containing 50% glycerol, 0.5% BSA and 0.02% sodium azide.
<b>Storage</b>	Store at -20°C. Avoid repeated freeze-thaw cycles.
<b>Protein Name</b>	Programmed cell death protein 2-like
<b>Gene Name</b>	PDCD2L
<b>Cellular localization</b>	cytoplasm,membrane,
<b>Purification</b>	The antibody was affinity-purified from rabbit antiserum by affinity-chromatography using epitope-specific immunogen.
<b>Clonality</b>	Polyclonal
<b>Concentration</b>	1 mg/ml
<b>Observed band</b>	39kD
<b>Human Gene ID</b>	84306
<b>Human Swiss-Prot Number</b>	Q9BRP1
<b>Alternative Names</b>	
<b>Background</b>	PDCD2L (Programmed Cell Death 2 Like) is a Protein Coding gene. An important paralog of this gene is ENSG00000266953. Over-expression suppresses AP1, CREB, NFAT, and NF-kB transcriptional activation, and delays cell cycle progression at S phase.





**ELK Biotechnology**



Western blot analysis of lysates from HCT116 cells,  
primary antibody was diluted at 1:1000, 4° over night



+86-27-59760950

[ELKbio@ELKbiotech.com](mailto:ELKbio@ELKbiotech.com)

[www.elkbiotech.com](http://www.elkbiotech.com)

23-2, No.388 Gaoxin 2nd Road, Wuhan East Lake Hi-tech Development Zone, Hubei, P.R.C