



MAGAA rabbit pAb

Cat No.:ES9201

For research use only

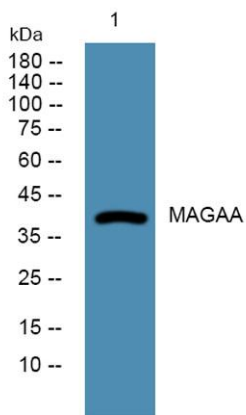
Overview

Product Name	MAGAA rabbit pAb
Host species	Rabbit
Applications	WB;ELISA
Species Cross-Reactivity	Human;Rat;Mouse;
Recommended dilutions	WB 1:500-2000 ELISA 1:5000-20000
Immunogen	Synthesized peptide derived from human protein . at AA range: 70-150
Specificity	MAGAA Polyclonal Antibody detects endogenous levels of protein.
Formulation	Liquid in PBS containing 50% glycerol, 0.5% BSA and 0.02% sodium azide.
Storage	Store at -20°C. Avoid repeated freeze-thaw cycles.
Protein Name	Melanoma-associated antigen 10 (Cancer/testis antigen 1.10) (CT1.10) (MAGE-10 antigen)
Gene Name	MAGEA10 MAGE10
Cellular localization	Nucleus .
Purification	The antibody was affinity-purified from rabbit antiserum by affinity-chromatography using epitope-specific immunogen.
Clonality	Polyclonal
Concentration	1 mg/ml
Observed band	40kD
Human Gene ID	4109
Human Swiss-Prot Number	P43363
Alternative Names	
Background	MAGE family member A10(MAGEA10) Homo sapiens This gene is a member of the MAGEA gene family. The members of this family encode proteins with 50 to 80% sequence identity to each other. The promoters and first exons of the MAGEA genes show considerable variability, suggesting that the existence of this gene family enables the same function to be expressed under different





transcriptional controls. The MAGEA genes are clustered at chromosomal location Xq28. They have been implicated in some hereditary disorders, such as dyskeratosis congenita. Alternative splicing results in multiple transcript variants. Read-through transcription also exists between this gene and the downstream melanoma antigen family A, 5 (MAGEA5) gene.[provided by RefSeq, Oct 2011],



Western blot analysis of lysates from U2OS cells, primary antibody was diluted at 1:1000, 4° over night

