



IFI27 rabbit pAb

Cat No.:ES9178

For research use only

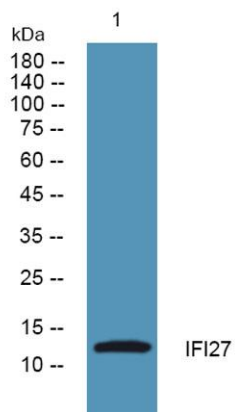
Overview

Product Name	IFI27 rabbit pAb
Host species	Rabbit
Applications	WB;ELISA
Species Cross-Reactivity	Human;Rat;Mouse;
Recommended dilutions	WB 1:500-2000 ELISA 1:5000-20000
Immunogen	Synthesized peptide derived from human protein . at AA range: 1-80
Specificity	IFI27 Polyclonal Antibody detects endogenous levels of protein.
Formulation	Liquid in PBS containing 50% glycerol, 0.5% BSA and 0.02% sodium azide.
Storage	Store at -20°C. Avoid repeated freeze-thaw cycles.
Protein Name	Interferon alpha-inducible protein 27, mitochondrial (p27) (Interferon alpha-induced 11.5 kDa protein) (Interferon-stimulated gene 12a protein) (ISG12(a))
Gene Name	IFI27
Cellular localization	Mitochondrion membrane ; Multi-pass membrane protein . Nucleus inner membrane ; Multi-pass membrane protein . Endoplasmic reticulum membrane ; Multi-pass membrane protein . Exclusive localizations in either the nucleus or the mitochondrion have been repor
Purification	The antibody was affinity-purified from rabbit antiserum by affinity-chromatography using epitope-specific immunogen.
Clonality	Polyclonal
Concentration	1 mg/ml
Observed band	13kD
Human Gene ID	3429
Human Swiss-Prot Number	P40305
Alternative Names	
Background	induction:By alpha interferons.,similarity:Belongs to the IFI6/IFI27 family.,





ELK Biotechnology



Western blot analysis of lysates from HCT116 cells,
primary antibody was diluted at 1:1000, 4° over night



+86-27-59760950

ELKbio@ELKbiotech.com

www.elkbiotech.com

23-2, No.388 Gaoxin 2nd Road, Wuhan East Lake Hi-tech Development Zone, Hubei, P.R.C