



# CP4FN rabbit pAb

Cat No.:ES9131

For research use only

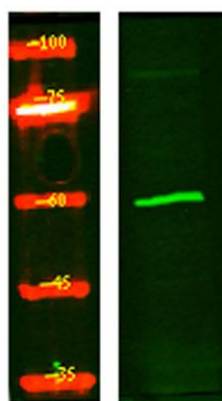
## Overview

<b>Product Name</b>	CP4FN rabbit pAb
<b>Host species</b>	Rabbit
<b>Applications</b>	WB;ELISA
<b>Species Cross-Reactivity</b>	Human;Rat;Mouse;
<b>Recommended dilutions</b>	WB 1:500-2000 ELISA 1:5000-20000
<b>Immunogen</b>	Synthesized peptide derived from human protein . at AA range: 440-520
<b>Specificity</b>	CP4FN Polyclonal Antibody detects endogenous levels of protein.
<b>Formulation</b>	Liquid in PBS containing 50% glycerol, 0.5% BSA and 0.02% sodium azide.
<b>Storage</b>	Store at -20°C. Avoid repeated freeze-thaw cycles.
<b>Protein Name</b>	Cytochrome P450 4F22 (EC 1.14.14.-)
<b>Gene Name</b>	CYP4F22
<b>Cellular localization</b>	Endoplasmic reticulum membrane ; Single-pass type I membrane protein . Microsome membrane ; Single-pass type I membrane protein .
<b>Purification</b>	The antibody was affinity-purified from rabbit antiserum by affinity-chromatography using epitope-specific immunogen.
<b>Clonality</b>	Polyclonal
<b>Concentration</b>	1 mg/ml
<b>Observed band</b>	58kD
<b>Human Gene ID</b>	126410
<b>Human Swiss-Prot Number</b>	Q6NT55
<b>Alternative Names</b>	
<b>Background</b>	cytochrome P450 family 4 subfamily F member 22(CYP4F22) Homo sapiens This gene encodes a member of the cytochrome P450 superfamily of enzymes. The cytochrome P450 proteins are monooxygenases which catalyze many reactions involved in drug metabolism and synthesis of cholesterol, steroids and other lipids. This gene is





part of a cluster of cytochrome P450 genes on chromosome 19 and encodes an enzyme thought to play a role in the 12(R)-lipoxygenase pathway. Mutations in this gene are the cause of ichthyosis lamellar type 3. [provided by RefSeq, Jul 2008],



Western Blot analysis of HEK293 lysis, using primary antibody at 1:1000 dilution. Secondary antibody(catalog#:RS23920) was diluted at 1:10000

