



SOX21 rabbit pAb

Cat No.:ES9111

For research use only

Overview

Product Name	SOX21 rabbit pAb
Host species	Rabbit
Applications	WB;ELISA
Species Cross-Reactivity	Human;Mouse
Recommended dilutions	WB 1:500-2000 ELISA 1:5000-20000
Immunogen	Synthesized peptide derived from human protein . at AA range: 10-90
Specificity	SOX21 Polyclonal Antibody detects endogenous levels of protein.
Formulation	Liquid in PBS containing 50% glycerol, 0.5% BSA and 0.02% sodium azide.
Storage	Store at -20°C. Avoid repeated freeze-thaw cycles.
Protein Name	Transcription factor SOX-21 (SOX-A)
Gene Name	SOX21 SOX25 SOXA
Cellular localization	Nucleus .
Purification	The antibody was affinity-purified from rabbit antiserum by affinity-chromatography using epitope-specific immunogen.
Clonality	Polyclonal
Concentration	1 mg/ml
Observed band	30kD
Human Gene ID	11166
Human Swiss-Prot Number	Q9Y651
Alternative Names	
Background	SRY-related HMG-box (SOX) genes encode a family of DNA-binding proteins containing a 79-amino acid HMG (high mobility group) domain that shares at least 50% sequence identity with the DNA-binding HMG box of the SRY protein (MIM 480000). SOX proteins are divided into 6 subgroups based on sequence similarity within and outside of the HMG domain. For additional background information on SOX genes, see SOX1 (MIM 602148).[supplied by

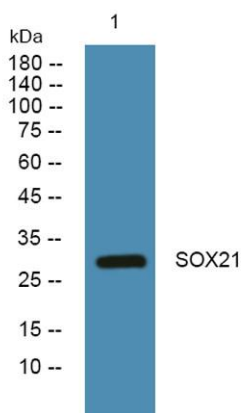




ELK Biotechnology

OMIM, Apr 2004],

Western blot analysis of lysates from SH-SY5Y cells,
primary antibody was diluted at 1:1000, 4° over night



+86-27-59760950

ELKbio@ELKbiotech.com

www.elkbiotech.com

23-2, No.388 Gaoxin 2nd Road, Wuhan East Lake Hi-tech Development Zone, Hubei, P.R.C