



ABC3C rabbit pAb

Cat No.:ES9095

For research use only

Overview

| | |
|---------------------------------|--|
| Product Name | ABC3C rabbit pAb |
| Host species | Rabbit |
| Applications | WB;ELISA |
| Species Cross-Reactivity | Human;Rat;Mouse; |
| Recommended dilutions | WB 1:500-2000 ELISA 1:5000-20000 |
| Immunogen | Synthesized peptide derived from human protein . at AA range: 10-90 |
| Specificity | ABC3C Polyclonal Antibody detects endogenous levels of protein. |
| Formulation | Liquid in PBS containing 50% glycerol, 0.5% BSA and 0.02% sodium azide. |
| Storage | Store at -20°C. Avoid repeated freeze-thaw cycles. |
| Protein Name | Probable DNA dC->dU-editing enzyme APOBEC-3C (EC 3.5.4.-) (APOBEC1-like) (Phorbolin I) |
| Gene Name | APOBEC3C APOBEC1L PBI |
| Cellular localization | Nucleus . Cytoplasm . |
| Purification | The antibody was affinity-purified from rabbit antiserum by affinity-chromatography using epitope-specific immunogen. |
| Clonality | Polyclonal |
| Concentration | 1 mg/ml |
| Observed band | 20kD |
| Human Gene ID | 27350 |
| Human Swiss-Prot Number | Q9NRW3 |
| Alternative Names | |
| Background | This gene is a member of the cytidine deaminase gene family. It is one of seven related genes or pseudogenes found in a cluster thought to result from gene duplication, on chromosome 22. Members of the cluster encode proteins that are structurally and functionally related to the C to U RNA-editing cytidine deaminase APOBEC1. It is thought that the proteins may be RNA editing |

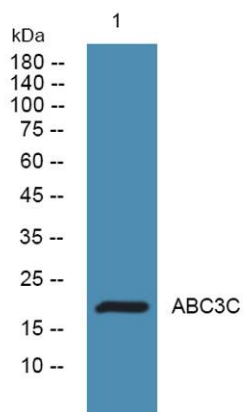




ELK Biotechnology

enzymes and have roles in growth or cell cycle control. [provided by RefSeq, Jul 2008],

Western blot analysis of lysates from K562 cells, primary antibody was diluted at 1:1000, 4° over night



+86-27-59760950

ELKbio@ELKbiotech.com

www.elkbiotech.com

23-2, No.388 Gaoxin 2nd Road, Wuhan East Lake Hi-tech Development Zone, Hubei, P.R.C