



CT47A rabbit pAb

Cat No.:ES9070

For research use only

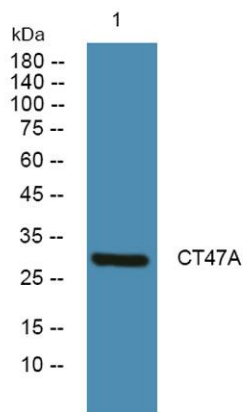
Overview

Product Name	CT47A rabbit pAb
Host species	Rabbit
Applications	WB;ELISA
Species Cross-Reactivity	Human;Rat;Mouse;
Recommended dilutions	WB 1:500-2000 ELISA 1:5000-20000
Immunogen	Synthesized peptide derived from human protein . at AA range: 210-290
Specificity	CT47A Polyclonal Antibody detects endogenous levels of protein.
Formulation	Liquid in PBS containing 50% glycerol, 0.5% BSA and 0.02% sodium azide.
Storage	Store at -20°C. Avoid repeated freeze-thaw cycles.
Protein Name	Cancer/testis antigen 47A (Cancer/testis antigen 47) (CT47)
Gene Name	CT47A1 CT47.1; CT47A2 CT47.2; CT47A3 CT47.3; CT47A4 CT47.4; CT47A5 CT47.5; CT47A6 CT47.6; CT47A7 CT47.7; CT47A8 CT47.8; CT47A9 CT47.9; CT47A10 CT47.10; CT47A11 CT47.11; CT47A12 CT47.12
Cellular localization	
Purification	The antibody was affinity-purified from rabbit antiserum by affinity-chromatography using epitope-specific immunogen.
Clonality	Polyclonal
Concentration	1 mg/ml
Observed band	31kD
Human Gene ID	100507170
Human Swiss-Prot Number	Q5JQC4
Alternative Names	
Background	This locus represents a member of the cancer/testis gene family 47. This family, also known as CT47, is comprised of 13 nearly identical loci clustered at Xq24. [provided by RefSeq, Sep 2010],





ELK Biotechnology



Western blot analysis of lysates from A431 cells, primary antibody was diluted at 1:1000, 4° over night



+86-27-59760950

ELKbio@ELKbiotech.com

www.elkbiotech.com

23-2, No.388 Gaoxin 2nd Road, Wuhan East Lake Hi-tech Development Zone, Hubei, P.R.C