



PITX3 rabbit pAb

Cat No.:ES9028

For research use only

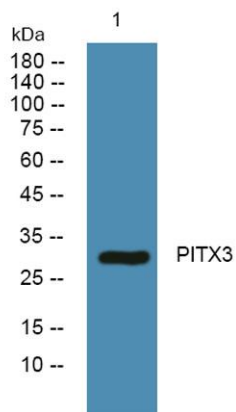
Overview

| | |
|---------------------------------|--|
| Product Name | PITX3 rabbit pAb |
| Host species | Rabbit |
| Applications | WB;ELISA |
| Species Cross-Reactivity | Human;Mouse;Rat |
| Recommended dilutions | WB 1:500-2000 ELISA 1:5000-20000 |
| Immunogen | Synthesized peptide derived from human protein . at AA range: 10-90 |
| Specificity | PITX3 Polyclonal Antibody detects endogenous levels of protein. |
| Formulation | Liquid in PBS containing 50% glycerol, 0.5% BSA and 0.02% sodium azide. |
| Storage | Store at -20°C. Avoid repeated freeze-thaw cycles. |
| Protein Name | Pituitary homeobox 3 (Homeobox protein PITX3) (Paired-like homeodomain transcription factor 3) |
| Gene Name | PITX3 PTX3 |
| Cellular localization | Nucleus . |
| Purification | The antibody was affinity-purified from rabbit antiserum by affinity-chromatography using epitope-specific immunogen. |
| Clonality | Polyclonal |
| Concentration | 1 mg/ml |
| Observed band | 33kD |
| Human Gene ID | 5309 |
| Human Swiss-Prot Number | O75364 |
| Alternative Names | |
| Background | This gene encodes a member of the RIEG/PITX homeobox family, which is in the bicoid class of homeodomain proteins. Members of this family act as transcription factors. This protein is involved in lens formation during eye development. Mutations of this gene have been associated with anterior segment mesenchymal dysgenesis and congenital cataracts. [provided by RefSeq, Jul 2008], |





ELK Biotechnology



Western blot analysis of lysates from K562 cells, primary antibody was diluted at 1:1000, 4° over night



+86-27-59760950

ELKbio@ELKbiotech.com

www.elkbiotech.com

23-2, No.388 Gaoxin 2nd Road, Wuhan East Lake Hi-tech Development Zone, Hubei, P.R.C