

# LSM1 rabbit pAb

Cat No.:ES9022

For research use only

## Overview

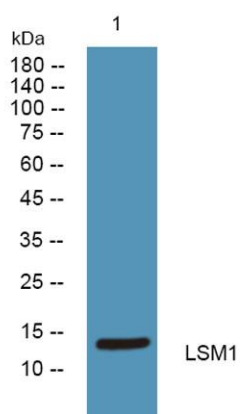
Product Name	LSM1 rabbit pAb
Host species	Rabbit
Applications	WB;ELISA
Species Cross-Reactivity	Human;Mouse
Recommended dilutions	WB 1:500-2000 ELISA 1:5000-20000
Immunogen	Synthesized peptide derived from human protein . at AA range: 50-130
Specificity	LSM1 Polyclonal Antibody detects endogenous levels of protein.
Formulation	Liquid in PBS containing 50% glycerol, 0.5% BSA and 0.02% sodium azide.
Storage	Store at -20°C. Avoid repeated freeze-thaw cycles.
Protein Name	U6 snRNA-associated Sm-like protein LSM1 (Cancer-associated Sm-like) (Small nuclear ribonuclear CaSm)
Gene Name	LSM1 CASM
Cellular localization	Cytoplasm . Cytoplasm, P-body .
Purification	The antibody was affinity-purified from rabbit antiserum by affinity-chromatography using epitope-specific immunogen.
Clonality	Polyclonal
Concentration	1 mg/ml
Observed band	14kD
Human Gene ID	27257
Human Swiss-Prot Number	O15116
Alternative Names	
Background	LSM1 homolog, mRNA degradation associated(LSM1) Homo sapiens This gene encodes a member of the LSm family of RNA-binding proteins. LSm proteins form stable heteromers that bind specifically to the 3'-terminal oligo(U) tract of U6 snRNA and may play a role in pre-mRNA splicing by mediating U4/U6 snRNP





formation. Increased expression of this gene may play a role in cellular transformation and the progression of several malignancies including lung cancer, mesothelioma and breast cancer.

Alternatively spliced transcript variants have been observed for this gene, and a pseudogene of this gene is located on the short arm of chromosome 9. [provided by RefSeq, Nov 2011],



Western blot analysis of lysates from K562 cells, primary antibody was diluted at 1:1000, 4° over night

