



# KIZ rabbit pAb

Cat No.:ES8976

For research use only

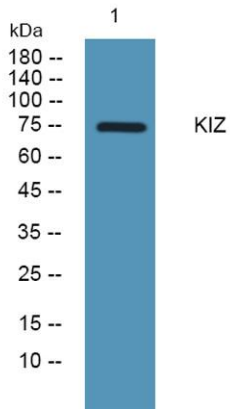
## Overview

|                                 |  |
|---------------------------------|--|
| <b>Product Name</b>             | KIZ rabbit pAb   |
| <b>Host species</b>             | Rabbit   |
| <b>Applications</b>             | WB;ELISA   |
| <b>Species Cross-Reactivity</b> | Human;Rat;Mouse;   |
| <b>Recommended dilutions</b>    | WB 1:500-2000 ELISA 1:5000-20000   |
| <b>Immunogen</b>                | Synthesized peptide derived from human protein .<br>at AA range: 320-400   |
| <b>Specificity</b>              | KIZ Polyclonal Antibody detects endogenous levels<br>of protein.   |
| <b>Formulation</b>              | Liquid in PBS containing 50% glycerol, 0.5% BSA and<br>0.02% sodium azide.   |
| <b>Storage</b>                  | Store at -20°C. Avoid repeated freeze-thaw cycles.   |
| <b>Protein Name</b>             | Centrosomal protein kizuna (Polo-like kinase 1<br>substrate 1)   |
| <b>Gene Name</b>                | PLK1S1 C20orf19 KIZ NCRNA00153 HT013   |
| <b>Cellular localization</b>    | Cytoplasm, cytoskeleton, microtubule organizing<br>center, centrosome . Cytoplasm, cytoskeleton, cilium<br>basal body . Localizes to centrosomes throughout<br>the cell cycle. After centrosome duplication, it<br>usually remains associated only with the mother<br>centroso |
| <b>Purification</b>             | The antibody was affinity-purified from rabbit<br>antiserum by affinity-chromatography using<br>epitope-specific immunogen.  |
| <b>Clonality</b>                | Polyclonal   |
| <b>Concentration</b>            | 1 mg/ml  |
| <b>Observed band</b>            | 74kD   |
| <b>Human Gene ID</b>            | 55857  |
| <b>Human Swiss-Prot Number</b>  | Q2M2Z5   |
| <b>Alternative Names</b>        |  |
| <b>Background</b>               | kizuna centrosomal protein(KIZ) Homo sapiens<br>The protein encoded by this gene localizes to<br>centrosomes, strengthening and stabilizing the  |





pericentriolar region prior to spindle formation. The encoded protein usually remains with the mother centrosome after centrosomal duplication. Several transcript variants encoding different isoforms have been found for this gene. [provided by RefSeq, Feb 2013],



Western blot analysis of lysates from KB cells, primary antibody was diluted at 1:1000, 4° over night

