



ANR28 rabbit pAb

Cat No.:ES8968

For research use only

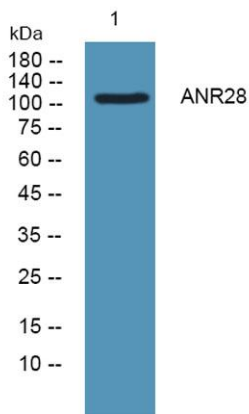
Overview

Product Name	ANR28 rabbit pAb
Host species	Rabbit
Applications	WB;ELISA
Species Cross-Reactivity	Human;Mouse
Recommended dilutions	WB 1:500-2000 ELISA 1:5000-20000
Immunogen	Synthesized peptide derived from human protein . at AA range: 980-1060
Specificity	ANR28 Polyclonal Antibody detects endogenous levels of protein.
Formulation	Liquid in PBS containing 50% glycerol, 0.5% BSA and 0.02% sodium azide.
Storage	Store at -20°C. Avoid repeated freeze-thaw cycles.
Protein Name	Serine/threonine-protein phosphatase 6 regulatory ankyrin repeat subunit A (PP6-ARS-A) (Serine/threonine-protein phosphatase 6 regulatory subunit ARS-A) (Ankyrin repeat domain-containing protein 28) (
Gene Name	ANKRD28 KIAA0379
Cellular localization	Nucleus, nucleoplasm . Seems to be excluded from nucleoli.
Purification	The antibody was affinity-purified from rabbit antiserum by affinity-chromatography using epitope-specific immunogen.
Clonality	Polyclonal
Concentration	1 mg/ml
Observed band	115kD
Human Gene ID	23243
Human Swiss-Prot Number	O15084
Alternative Names	
Background	function:Putative regulatory subunit of protein phosphatase 6 (PP6) that may be involved in the recognition of phosphoprotein substrates. Involved in the PP6-mediated dephosphorylation of NFKBIE





opposing its degradation in response to TNF-alpha. Selectively inhibits the phosphatase activity of PPP1C. Targets PPP1C to modulate HNRPK phosphorylation.,similarity:Contains 27 ANK repeats.,subcellular location:Seems to be excluded from nucleoli.,subunit:Protein phosphatase 6 (PP6) holoenzyme is proposed to be a heterotrimeric complex formed by the catalytic subunit, a SAPS domain-containing subunit (PP6R) and an ankyrin repeat-domain containing regulatory subunit (ARS). Interacts with PPP1C and HNRPK. Interacts with PPP6C, SAPS1 and SAPS3.,



Western blot analysis of lysates from Jarkat cells, primary antibody was diluted at 1:1000, 4° over night

