



# DAG1 rabbit pAb

Cat No.:ES8965

For research use only

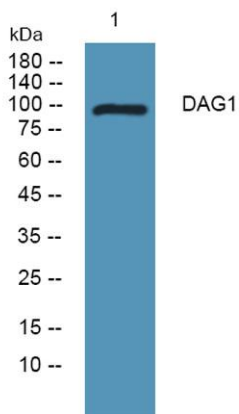
## Overview

<b>Product Name</b>	DAG1 rabbit pAb
<b>Host species</b>	Rabbit
<b>Applications</b>	WB;ELISA
<b>Species Cross-Reactivity</b>	Human;Mouse
<b>Recommended dilutions</b>	WB 1:500-2000 ELISA 1:5000-20000
<b>Immunogen</b>	Synthesized peptide derived from human protein . at AA range: 830-910
<b>Specificity</b>	DAG1 Polyclonal Antibody detects endogenous levels of protein.
<b>Formulation</b>	Liquid in PBS containing 50% glycerol, 0.5% BSA and 0.02% sodium azide.
<b>Storage</b>	Store at -20°C. Avoid repeated freeze-thaw cycles.
<b>Protein Name</b>	Dystroglycan (Dystrophin-associated glycoprotein 1) [Cleaved into: Alpha-dystroglycan (Alpha-DG); Beta-dystroglycan (Beta-DG)]
<b>Gene Name</b>	DAG1
<b>Cellular localization</b>	[Alpha-dystroglycan]: Secreted, extracellular space.; [Beta-dystroglycan]: Cell membrane ; Single-pass type I membrane protein. Cytoplasm, cytoskeleton. Nucleus, nucleoplasm . Cell membrane, sarcolemma . Cell junction, synapse, postsynaptic cell membrane
<b>Purification</b>	The antibody was affinity-purified from rabbit antiserum by affinity-chromatography using epitope-specific immunogen.
<b>Clonality</b>	Polyclonal
<b>Concentration</b>	1 mg/ml
<b>Observed band</b>	98kD
<b>Human Gene ID</b>	1605
<b>Human Swiss-Prot Number</b>	Q14118
<b>Alternative Names</b>	
<b>Background</b>	This gene encodes dystroglycan, a central component of dystrophin-glycoprotein complex that





links the extracellular matrix and the cytoskeleton in the skeletal muscle. The encoded preproprotein undergoes O- and N-glycosylation, and proteolytic processing to generate alpha and beta subunits. Certain mutations in this gene are known to cause distinct forms of muscular dystrophy. Alternative splicing results in multiple transcript variants, all encoding the same protein. [provided by RefSeq, Nov 2015],



Western blot analysis of lysates from K562 cells, primary antibody was diluted at 1:1000, 4° over night

