



Na⁺/K⁺-ATPase α1 (Phospho-Tyr260) rabbit pAb

Cat No.:ES8885

For research use only

Overview

Product Name	Na ⁺ /K ⁺ -ATPase α1 (Phospho-Tyr260) rabbit pAb
Host species	Rabbit
Applications	WB;IHC
Species Cross-Reactivity	Human;Mouse;Rat
Recommended dilutions	WB 1:500-2000;IHC-p 1:50-300
Immunogen	Synthesized phospho derived from human Na ⁺ /K ⁺ -ATPase α1 (Phospho-Tyr260) Polyclonal
Specificity	This antibody detects endogenous levels of Na ⁺ /K ⁺ -ATPase α1 (Phospho-Tyr260).
Formulation	Liquid in PBS containing 50% glycerol, 0.5% BSA and 0.02% sodium azide.
Storage	Store at -20°C. Avoid repeated freeze-thaw cycles.
Protein Name	Sodium/potassium-transporting ATPase subunit alpha-1 (Na ⁺)/K ⁺ ATPase alpha-1 subunit) (EC 3.6.3.9) (Sodium pump subunit alpha-1)
Gene Name	ATP1A1
Cellular localization	Basolateral cell membrane ; Multi-pass membrane protein . Cell membrane, sarcolemma ; Multi-pass membrane protein . Cell projection, axon . Melanosome . Identified by mass spectrometry in melanosome fractions from stage I to stage IV. .
Purification	The antibody was affinity-purified from rabbit antiserum by affinity-chromatography using epitope-specific immunogen.
Clonality	Polyclonal
Concentration	1 mg/ml
Observed band	115kD
Human Gene ID	476
Human Swiss-Prot Number	P05023
Alternative Names	Sodium/potassium-transporting ATPase subunit alpha-1 (Na ⁺)/K ⁺ ATPase alpha-1 subunit) (EC 3.6.3.9) (Sodium pump subunit alpha-1)

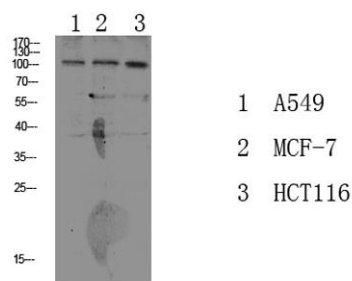




Background

The protein encoded by this gene belongs to the family of P-type cation transport ATPases, and to the subfamily of Na⁺/K⁺ -ATPases. Na⁺/K⁺ -ATPase is an integral membrane protein responsible for establishing and maintaining the electrochemical gradients of Na and K ions across the plasma membrane. These gradients are essential for osmoregulation, for sodium-coupled transport of a variety of organic and inorganic molecules, and for electrical excitability of nerve and muscle. This enzyme is composed of two subunits, a large catalytic subunit (alpha) and a smaller glycoprotein subunit (beta). The catalytic subunit of Na⁺/K⁺ -ATPase is encoded by multiple genes. This gene encodes an alpha 1 subunit. Multiple transcript variants encoding different isoforms have been found for this gene. [provided by RefSeq, May 2009],

Western blot analysis of various lysate, antibody was diluted at 1000. Secondary antibody(catalog#:RS0002) was diluted at 1:20000



Immunohistochemical analysis of paraffin-embedded human cervical carcinoma. 1, Antibody was diluted at 1:200(4° overnight). 2, Tris-EDTA,pH9.0 was used for antigen retrieval. 3,Secondary antibody was diluted at 1:200(room temperature, 45min).

