



# GRK2 (Phospho-Ser685) Antibody

Cat No.:ES8884

For research use only

## Overview

<b>Product Name</b>	GRK2 (Phospho-Ser685) Antibody
<b>Host species</b>	Rabbit
<b>Applications</b>	WB;ELISA
<b>Species Cross-Reactivity</b>	Human;Mouse;Rat
<b>Recommended dilutions</b>	WB 1:500-2000, ELISA 1:10000-20000
<b>Immunogen</b>	Synthesized phospho derived from human GRK2 (Phospho-Ser685)
<b>Specificity</b>	This detects endogenous levels of GRK2 (Phospho-Ser685)
<b>Formulation</b>	Liquid in PBS containing 50% glycerol, 0.5% BSA and 0.02% sodium azide.
<b>Storage</b>	Store at -20°C. Avoid repeated freeze-thaw cycles.
<b>Protein Name</b>	Beta-adrenergic receptor kinase 1 (Beta-ARK-1) (EC 2.7.11.15) (G-protein coupled receptor kinase 2)
<b>Gene Name</b>	ADRBK1 BARK BARK1 GRK2
<b>Cellular localization</b>	Cytoplasm . Cell membrane . Cell junction, synapse, postsynapse . Cell junction, synapse, presynapse .
<b>Purification</b>	The antibody was affinity-purified from rabbit antiserum by affinity-chromatography using epitope-specific immunogen.
<b>Clonality</b>	Polyclonal
<b>Concentration</b>	1 mg/ml
<b>Observed band</b>	80kD
<b>Human Gene ID</b>	156
<b>Human Swiss-Prot Number</b>	P25098
<b>Alternative Names</b>	Beta-adrenergic receptor kinase 1 (Beta-ARK-1) (EC 2.7.11.15) (G-protein coupled receptor kinase 2)
<b>Background</b>	The product of this gene phosphorylates the beta-2-adrenergic receptor and appears to mediate agonist-specific desensitization observed at high agonist concentrations. This protein is an ubiquitous cytosolic enzyme that specifically phosphorylates the activated form of the beta-adrenergic and

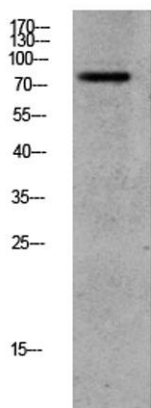




**ELK Biotechnology**

related G-protein-coupled receptors. Abnormal coupling of beta-adrenergic receptor to G protein is involved in the pathogenesis of the failing heart. [provided by RefSeq, Jul 2008],

Western blot analysis of CACO2 lysate, antibody was diluted at 1000. Secondary antibody(catalog#:RS0002) was diluted at 1:20000



+86-27-59760950

ELKbio@ELKbiotech.com

www.elkbiotech.com

23-2, No.388 Gaoxin 2nd Road,Wuhan East Lake Hi-tech Development Zone, Hubei , P.R.C