



eEF2 (Phospho-Thr56) Antibody

Cat No.:ES8874

For research use only

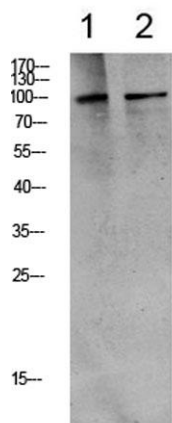
Overview

Product Name	eEF2 (Phospho-Thr56) Antibody
Host species	Rabbit
Applications	WB;ELISA
Species Cross-Reactivity	Human;Mouse;Rat
Recommended dilutions	WB 1:500-2000, ELISA 1:10000-20000
Immunogen	Synthesized phospho derived from human eEF2 (Phospho-Thr56)
Specificity	This detects endogenous levels of eEF2 (Phospho-Thr56)
Formulation	Liquid in PBS containing 50% glycerol, 0.5% BSA and 0.02% sodium azide.
Storage	Store at -20°C. Avoid repeated freeze-thaw cycles.
Protein Name	Elongation factor 2 (EF-2)
Gene Name	EEF2 EF2
Cellular localization	Cytoplasm . Nucleus . Phosphorylation by CSK promotes cleavage and SUMOylation-dependent nuclear translocation of the C-terminal cleavage product. .
Purification	The antibody was affinity-purified from rabbit antiserum by affinity-chromatography using epitope-specific immunogen.
Clonality	Polyclonal
Concentration	1 mg/ml
Observed band	100kD
Human Gene ID	1938
Human Swiss-Prot Number	P13639
Alternative Names	Elongation factor 2 (EF-2)
Background	This gene encodes a member of the GTP-binding translation elongation factor family. This protein is an essential factor for protein synthesis. It promotes the GTP-dependent translocation of the nascent protein chain from the A-site to the P-site of the ribosome. This protein is completely inactivated by





EF-2 kinase phosphorylation. [provided by RefSeq, Jul 2008],



Western blot analysis of various lysate, antibody was diluted at 1000. Secondary antibody(catalog#:RS0002) was diluted at 1:20000

1 3⁻
2 H

