



# NMUR2 rabbit pAb

Cat No.:ES8867

For research use only

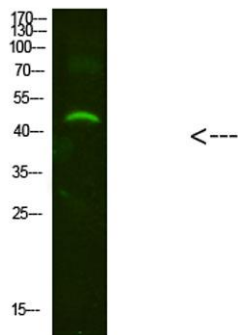
## Overview

<b>Product Name</b>	NMUR2 rabbit pAb
<b>Host species</b>	Rabbit
<b>Applications</b>	WB;ELISA
<b>Species Cross-Reactivity</b>	Human;Rat;Mouse;
<b>Recommended dilutions</b>	WB 1:500-2000, ELISA 1:10000-20000
<b>Immunogen</b>	Synthesized peptide derived from human NMUR2. at AA range: 1-50
<b>Specificity</b>	NMUR2 Polyclonal Antibody detects endogenous levels of NMUR2
<b>Formulation</b>	Liquid in PBS containing 50% glycerol, 0.5% BSA and 0.02% sodium azide.
<b>Storage</b>	Store at -20°C. Avoid repeated freeze-thaw cycles.
<b>Protein Name</b>	NMUR2
<b>Gene Name</b>	NMUR2
<b>Cellular localization</b>	Cell membrane; Multi-pass membrane protein.
<b>Purification</b>	The antibody was affinity-purified from rabbit antiserum by affinity-chromatography using epitope-specific immunogen.
<b>Clonality</b>	Polyclonal
<b>Concentration</b>	1 mg/ml
<b>Observed band</b>	46kD
<b>Human Gene ID</b>	56923
<b>Human Swiss-Prot Number</b>	Q9GZQ4
<b>Alternative Names</b>	Neuromedin-U receptor 2 (NMU-R2) (G-protein coupled receptor FM-4) (G-protein coupled receptor TGR-1)
<b>Background</b>	This gene encodes a protein from the G-protein coupled receptor 1 family. This protein is a receptor for neuromedin U, which is a neuropeptide that is widely distributed in the gut and central nervous system. This receptor plays an important role in the regulation of food intake and body weight. [provided by RefSeq, Jul 2008],





**ELK Biotechnology**



Western Blot analysis of mouse-brain cells using primary antibody diluted at 1:2000(4°C overnight). Secondary antibody:Goat Anti-rabbit IgG IRDye 800( diluted at 1:5000, 25°C, 1 hour)



+86-27-59760950

[ELKbio@ELKbiotech.com](mailto:ELKbio@ELKbiotech.com)

[www.elkbiotech.com](http://www.elkbiotech.com)

23-2, No.388 Gaoxin 2nd Road,Wuhan East Lake Hi-tech Development Zone, Hubei , P.R.C