



C8 α rabbit pAb

Cat No.:ES8864

For research use only

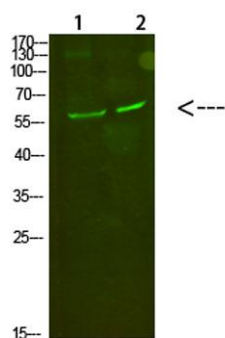
Overview

Product Name	C8 α rabbit pAb
Host species	Rabbit
Applications	WB;ELISA
Species Cross-Reactivity	Human;Rat;Mouse;
Recommended dilutions	WB 1:500-2000, ELISA 1:10000-20000
Immunogen	Synthesized peptide derived from human C8 α . at AA range: 201-250
Specificity	C8 α Polyclonal Antibody detects endogenous levels of C8 α
Formulation	Liquid in PBS containing 50% glycerol, 0.5% BSA and 0.02% sodium azide.
Storage	Store at -20°C. Avoid repeated freeze-thaw cycles.
Protein Name	C8 α
Gene Name	C8A
Cellular localization	Secreted. Cell membrane; Multi-pass membrane protein. Secreted as soluble protein. Inserts into the cell membrane of target cells.
Purification	The antibody was affinity-purified from rabbit antiserum by affinity-chromatography using epitope-specific immunogen.
Clonality	Polyclonal
Concentration	1 mg/ml
Observed band	60kD
Human Gene ID	731
Human Swiss-Prot Number	P07357
Alternative Names	Complement component C8 alpha chain (Complement component 8 subunit alpha)
Background	C8 is a component of the complement system and contains three polypeptides, alpha, beta and gamma. This gene encodes the alpha subunit of C8. C8 participates in the formation of the membrane attack complex (MAC). The MAC assembles on bacterial membranes to form a pore, permitting





disruption of bacterial membrane organization.
Mutations in this gene cause complement C8
alpha-gamma deficiency. [provided by RefSeq, Nov
2008],



Western Blot analysis of 1,mouse-kidney 2,mouse-heart
cells using primary antibody diluted at 1:500(4°C
overnight). Secondary antibody:Goat Anti-rabbit IgG
IRDye 800(diluted at 1:5000, 25°C, 1 hour)

