



FIG4 rabbit pAb

Cat No.:ES8837

For research use only

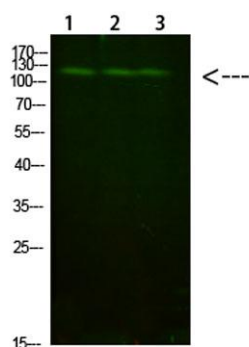
Overview

| | |
|---------------------------------|---|
| Product Name | FIG4 rabbit pAb |
| Host species | Rabbit |
| Applications | WB;ELISA |
| Species Cross-Reactivity | Human;Mouse |
| Recommended dilutions | WB 1:500-2000, ELISA 1:10000-20000 |
| Immunogen | Synthesized peptide derived from human FIG4. at AA range: 341-390 |
| Specificity | This antibody detects endogenous levels of FIG4 |
| Formulation | Liquid in PBS containing 50% glycerol, 0.5% BSA and 0.02% sodium azide. |
| Storage | Store at -20°C. Avoid repeated freeze-thaw cycles. |
| Protein Name | FIG4 |
| Gene Name | FIG4 KIAA0274 SAC3 |
| Cellular localization | Endosome membrane . Localization requires VAC14 and PIKFYVE. . |
| Purification | The antibody was affinity-purified from rabbit antiserum by affinity-chromatography using epitope-specific immunogen. |
| Clonality | Polyclonal |
| Concentration | 1 mg/ml |
| Observed band | 110kD |
| Human Gene ID | 9896 |
| Human Swiss-Prot Number | Q92562 |
| Alternative Names | Polyphosphoinositide phosphatase (EC 3.1.3.-) (Phosphatidylinositol 3,5-bisphosphate 5-phosphatase) (SAC domain-containing protein 3) |
| Background | The protein encoded by this gene belongs to the SAC domain-containing protein gene family. The SAC domain, approximately 400 amino acids in length and consisting of seven conserved motifs, has been shown to possess phosphoinositide phosphatase activity. The yeast homolog, Sac1p, is involved in the regulation of various phosphoinositides, and affects |





diverse cellular functions such as actin cytoskeleton organization, Golgi function, and maintenance of vacuole morphology. Membrane-bound phosphoinositides function as signaling molecules and play a key role in vesicle trafficking in eukaryotic cells. Mutations in this gene have been associated with Charcot-Marie-Tooth disease, type 4J. [provided by RefSeq, Jul 2008],



Western Blot analysis of 1,mouse-liver 2,hela 3,mouse-brain cells using primary antibody diluted at 1:1000(4°C overnight). Secondary antibody:Goat Anti-rabbit IgG IRDye 800(diluted at 1:5000, 25°C, 1 hour)

