



NUT rabbit pAb

Cat No.:ES8833

For research use only

Overview

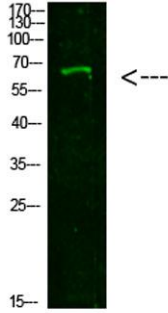
Product Name	NUT rabbit pAb
Host species	Rabbit
Applications	WB;ELISA
Species Cross-Reactivity	Human;Rat;Mouse;
Recommended dilutions	WB 1:500-2000, ELISA 1:10000-20000
Immunogen	Synthesized peptide derived from human NUT. at AA range: 1082-1131
Specificity	This antibody detects endogenous levels of NUT
Formulation	Liquid in PBS containing 50% glycerol, 0.5% BSA and 0.02% sodium azide.
Storage	Store at -20°C. Avoid repeated freeze-thaw cycles.
Protein Name	NUT
Gene Name	NUT C15orf55
Cellular localization	Cytoplasm . Nucleus . Shuttles between nucleus and cytoplasm. .
Purification	The antibody was affinity-purified from rabbit antiserum by affinity-chromatography using epitope-specific immunogen.
Clonality	Polyclonal
Concentration	1 mg/ml
Observed band	63kD
Human Gene ID	256646
Human Swiss-Prot Number	Q86Y26
Alternative Names	Protein NUT (Nuclear protein in testis)
Background	disease:A chromosomal aberration involving NUT is found in a rare, aggressive, and lethal carcinoma arising in midline organs of young people. Translocation t(15;19)(q14;p13) with BRD4 which produces a BRD4-NUT fusion protein.,disease:A chromosomal aberration involving NUT is found in a rare, aggressive, and lethal carcinoma arising in midline organs of young people. Translocation t(15;9)(q14;q34) with BRD3 which produces a





ELK Biotechnology

BRD3-NUT fusion protein.,PTM:Phosphorylation on Ser-1026, Ser-1029 or Ser-1031 is important for cytoplasmic export.,similarity:Belongs to the FAM22 family.,subcellular location:Shuttles between nucleus and cytoplasm.,tissue specificity:Specifically expressed in testis.,



Western Blot analysis of 293T cells using primary antibody diluted at 1:1000(4°C overnight). Secondary antibody:Goat Anti-rabbit IgG IRDye 800(diluted at 1:5000, 25°C, 1 hour)



+86-27-59760950

ELKbio@ELKbiotech.com

www.elkbiotech.com

23-2, No.388 Gaoxin 2nd Road,Wuhan East Lake Hi-tech Development Zone, Hubei , P.R.C