



## Rb (Acetyl-K873/K874) rabbit pAb

Cat No.:ES8829

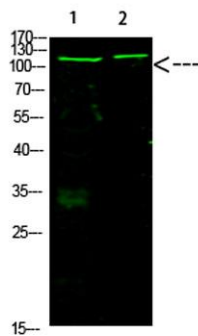
For research use only

### Overview

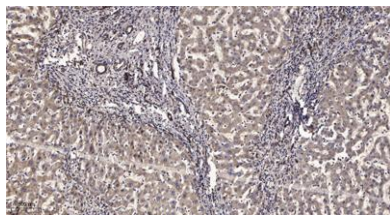
Product Name	Rb (Acetyl-K873/K874) rabbit pAb
Host species	Rabbit
Applications	WB;IHC
Species Cross-Reactivity	Human:K873+K874;Mouse:K866+K867;Rat:K865+K866
Recommended dilutions	WB 1:500-2000;IHC-p 1:50-300
Immunogen	Synthesized Acetyl peptide derived from human Rb. at AA range: K873/872
Specificity	This antibody detects endogenous levels of Rb at Human:K873+K874;Mouse:K866+K867;Rat:K865+K866, It doesn't react with total protein.
Formulation	Liquid in PBS containing 50% glycerol, 0.5% BSA and 0.02% sodium azide.
Storage	Store at -20°C. Avoid repeated freeze-thaw cycles.
Protein Name	Rb
Gene Name	RB1
Cellular localization	Nucleus . During keratinocyte differentiation, acetylation by KAT2B/PCAF is required for nuclear localization. .
Purification	The antibody was affinity-purified from rabbit antiserum by affinity-chromatography using epitope-specific immunogen.
Clonality	Polyclonal
Concentration	1 mg/ml
Observed band	
Human Gene ID	5925
Human Swiss-Prot Number	P06400
Alternative Names	Retinoblastoma-associated protein (p105-Rb) (pRb) (Rb) (pp110)
Background	The protein encoded by this gene is a negative regulator of the cell cycle and was the first tumor suppressor gene found. The encoded protein also stabilizes constitutive heterochromatin to maintain the overall chromatin structure. The active,



hypophosphorylated form of the protein binds transcription factor E2F1. Defects in this gene are a cause of childhood cancer retinoblastoma (RB), bladder cancer, and osteogenic sarcoma. [provided by RefSeq, Jul 2008],



Western Blot analysis of 1,mouse-heart 3,mouse-brain cells using primary antibody diluted at 1:1000(4°C overnight). Secondary antibody:Goat Anti-rabbit IgG IRDye 800( diluted at 1:5000, 25°C, 1 hour)



Immunohistochemical analysis of paraffin-embedded human liver cancer. 1, Antibody was diluted at 1:200(4°C overnight). 2, Tris-EDTA,pH9.0 was used for antigen retrieval. 3,Secondary antibody was diluted at 1:200(room temperature, 45min).

