



CNPY3 rabbit pAb

Cat No.:ES8809

For research use only

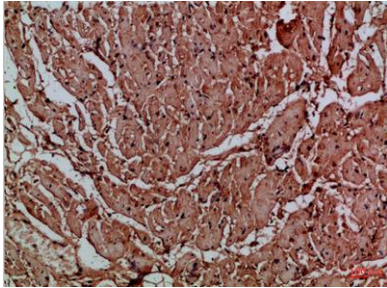
Overview

Product Name	CNPY3 rabbit pAb
Host species	Rabbit
Applications	IHC;IF;ELISA
Species Cross-Reactivity	Human;Mouse
Recommended dilutions	IHC-p 1:50-200, ELISA 1:10000-20000
Immunogen	Synthetic peptide from human protein at AA range: 1-50
Specificity	The antibody detects endogenous CNPY3
Formulation	Liquid in PBS containing 50% glycerol, 0.5% BSA and 0.02% sodium azide.
Storage	Store at -20°C. Avoid repeated freeze-thaw cycles.
Protein Name	Protein canopy homolog 3 (CTG repeat protein 4a) (Expanded repeat-domain protein CAG/CTG 5) (Protein associated with TLR4) (Trinucleotide repeat-containing gene 5 protein)
Gene Name	CNPY3 CTG4A ERDA5 PRAT4A TNRC5 HSPC084 UNQ1934/PRO4409
Cellular localization	Endoplasmic reticulum .
Purification	The antibody was affinity-purified from rabbit antiserum by affinity-chromatography using epitope-specific immunogen.
Clonality	Polyclonal
Concentration	1 mg/ml
Observed band	
Human Gene ID	10695
Human Swiss-Prot Number	Q9BT09
Alternative Names	Protein canopy homolog 3 (CTG repeat protein 4a;Expanded repeat-domain protein CAG/CTG 5;Protein associated with TLR4;Trinucleotide repeat-containing gene 5 protein)
Background	canopy FGF signaling regulator 3(CNPY3) Homo sapiens This gene encodes a protein that binds members of the toll-like receptor protein family and

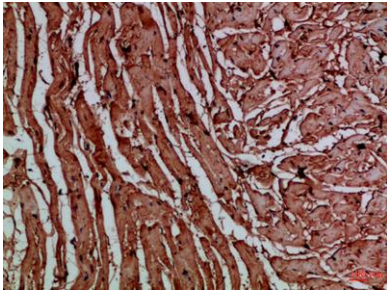


functions as a chaperone to aid in folding and export of these proteins. Alternative splicing results in multiple transcript variants. Naturally occurring readthrough transcription occurs between this locus and the downstream GNMT (glycine N-methyltransferase) gene and is represented with GeneID:107080644. [provided by RefSeq, Jan 2016],

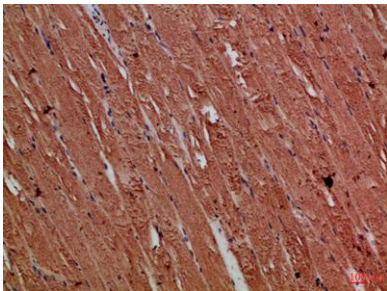
Immunohistochemical analysis of paraffin-embedded Human-heart, antibody was diluted at 1:100



Immunohistochemical analysis of paraffin-embedded Human-heart, antibody was diluted at 1:100



Immunohistochemical analysis of paraffin-embedded Human-skeletal-muscle, antibody was diluted at 1:100





ELK Biotechnology

Immunohistochemical analysis of paraffin-embedded
Human-skeletal-muscle, antibody was diluted at 1:100

