



## IL-8RA rabbit pAb

Cat No.:ES8797

For research use only

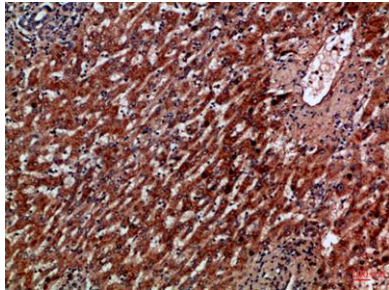
### Overview

|                                 |  |
|---------------------------------|--|
| <b>Product Name</b>             | IL-8RA rabbit pAb  |
| <b>Host species</b>             | Rabbit   |
| <b>Applications</b>             | WB;IHC;IF;ELISA  |
| <b>Species Cross-Reactivity</b> | Human  |
| <b>Recommended dilutions</b>    | IHC-p 1:50-200, ELISA 1:10000-20000  |
| <b>Immunogen</b>                | Synthetic peptide from human protein at AA range: 1-50   |
| <b>Specificity</b>              | The antibody detects endogenous IL-8RA   |
| <b>Formulation</b>              | Liquid in PBS containing 50% glycerol, 0.5% BSA and 0.02% sodium azide.  |
| <b>Storage</b>                  | Store at -20°C. Avoid repeated freeze-thaw cycles.   |
| <b>Protein Name</b>             | C-X-C chemokine receptor type 1 (CXC-R1) (CXCR-1) (CDw128a) (High affinity interleukin-8 receptor A) (IL-8R A) (IL-8 receptor type 1) (CD antigen CD181)   |
| <b>Gene Name</b>                | CXCR1 CMKAR1 IL8RA   |
| <b>Cellular localization</b>    | Cell membrane; Multi-pass membrane protein.  |
| <b>Purification</b>             | The antibody was affinity-purified from rabbit antiserum by affinity-chromatography using epitope-specific immunogen.  |
| <b>Clonality</b>                | Polyclonal   |
| <b>Concentration</b>            | 1 mg/ml  |
| <b>Observed band</b>            |  |
| <b>Human Gene ID</b>            | 3577   |
| <b>Human Swiss-Prot Number</b>  | P25024   |
| <b>Alternative Names</b>        | C-X-C chemokine receptor type 1 (CXC-R1;CXCR-1;CDw128a;High affinity interleukin-8 receptor A;IL-8R A;IL-8 receptor type 1;CD antigen CD181)   |
| <b>Background</b>               | C-X-C motif chemokine receptor 1(CXCR1) Homo sapiens The protein encoded by this gene is a member of the G-protein-coupled receptor family. This protein is a receptor for interleukin 8 (IL8). It binds to IL8 with high affinity, and transduces the |

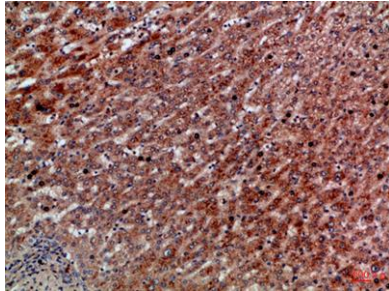


signal through a G-protein activated second messenger system. Knockout studies in mice suggested that this protein inhibits embryonic oligodendrocyte precursor migration in developing spinal cord. This gene, IL8RB, a gene encoding another high affinity IL8 receptor, as well as IL8RBP, a pseudogene of IL8RB, form a gene cluster in a region mapped to chromosome 2q33-q36. [provided by RefSeq, Jul 2008],

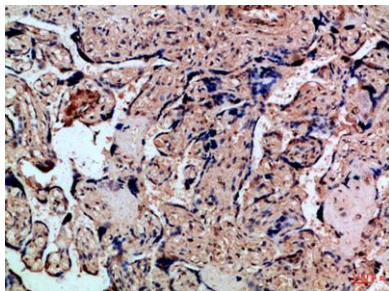
Immunohistochemical analysis of paraffin-embedded Human-liver-cancer, antibody was diluted at 1:100



Immunohistochemical analysis of paraffin-embedded Human-liver-cancer, antibody was diluted at 1:100



Immunohistochemical analysis of paraffin-embedded Human-placenta, antibody was diluted at 1:100





**ELK Biotechnology**

