



CD52 rabbit pAb

Cat No.:ES8787

For research use only

Overview

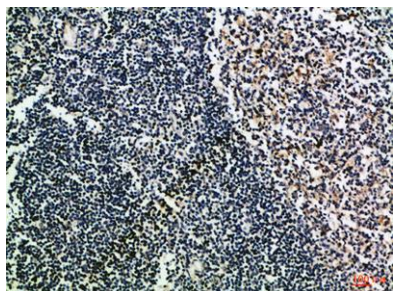
Product Name	CD52 rabbit pAb
Host species	Rabbit
Applications	IHC;IF;ELISA
Species Cross-Reactivity	Human;Rat;Mouse;
Recommended dilutions	IHC-p 1:50-200, ELISA 1:10000-20000
Immunogen	Synthetic peptide from human protein at AA range: 20-50
Specificity	The antibody detects endogenous CD52
Formulation	Liquid in PBS containing 50% glycerol, 0.5% BSA and 0.02% sodium azide.
Storage	Store at -20°C. Avoid repeated freeze-thaw cycles.
Protein Name	CAMPATH-1 antigen (CDw52) (Cambridge pathology 1 antigen) (Epididymal secretory protein E5) (Human epididymis-specific protein 5) (He5) (CD antigen CD52)
Gene Name	CD52 CDW52 HE5
Cellular localization	Cell membrane; Lipid-anchor, GPI-anchor.
Purification	The antibody was affinity-purified from rabbit antiserum by affinity-chromatography using epitope-specific immunogen.
Clonality	Polyclonal
Concentration	1 mg/ml
Observed band	
Human Gene ID	1043
Human Swiss-Prot Number	P31358
Alternative Names	CAMPATH-1 antigen (CDw52;Cambridge pathology 1 antigen;Epididymal secretory protein E5;Human epididymis-specific protein 5;He5;CD antigen CD52)
Background	function:May play a role in carrying and orienting carbohydrate, as well as having a more specific role.,



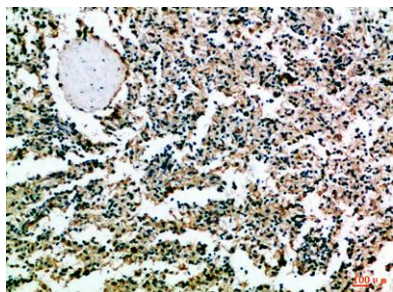


ELK Biotechnology

Immunohistochemical analysis of paraffin-embedded
Human-tonsil, antibody was diluted at 1:100



Immunohistochemical analysis of paraffin-embedded
Human-spleen, antibody was diluted at 1:100



+86-27-59760950

ELKbio@ELKbiotech.com

www.elkbiotech.com

23-2, No.388 Gaoxin 2nd Road,Wuhan East Lake Hi-tech Development Zone, Hubei , P.R.C