



HLA-DM β rabbit pAb

Cat No.:ES8783

For research use only

Overview

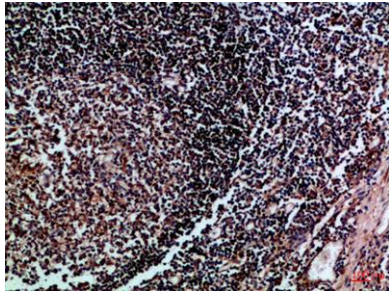
Product Name	HLA-DM β rabbit pAb
Host species	Rabbit
Applications	IHC;IF;ELISA
Species Cross-Reactivity	Human
Recommended dilutions	IHC-p 1:50-200, ELISA 1:10000-20000
Immunogen	Synthetic peptide from human protein at AA range: 40-100
Specificity	The antibody detects endogenous HLA-DM β
Formulation	Liquid in PBS containing 50% glycerol, 0.5% BSA and 0.02% sodium azide.
Storage	Store at -20°C. Avoid repeated freeze-thaw cycles.
Protein Name	HLA class II histocompatibility antigen, DM beta chain (MHC class II antigen DMB) (Really interesting new gene 7 protein)
Gene Name	HLA-DMB DMB RING7
Cellular localization	Late endosome membrane ; Single-pass type I membrane protein . Lysosome membrane ; Single-pass type I membrane protein . Localizes to late endocytic compartment. Associates with lysosome membranes.
Purification	The antibody was affinity-purified from rabbit antiserum by affinity-chromatography using epitope-specific immunogen.
Clonality	Polyclonal
Concentration	1 mg/ml
Observed band	
Human Gene ID	3109
Human Swiss-Prot Number	P28068
Alternative Names	HLA class II histocompatibility antigen, DM beta chain (MHC class II antigen DMB;Really interesting new gene 7 protein)
Background	HLA-DMB belongs to the HLA class II beta chain paralogues. This class II molecule is a heterodimer



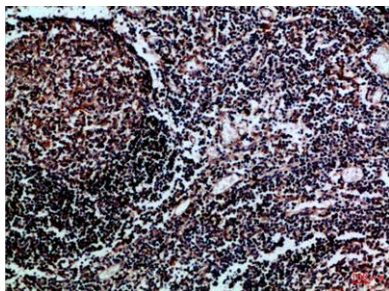


consisting of an alpha (DMA) and a beta (DMB) chain, both anchored in the membrane. It is located in intracellular vesicles. DM plays a central role in the peptide loading of MHC class II molecules by helping to release the CLIP (class II-associated invariant chain peptide) molecule from the peptide binding site. Class II molecules are expressed in antigen presenting cells (APC: B lymphocytes, dendritic cells, macrophages). The beta chain is approximately 26-28 kDa and its gene contains 6 exons. Exon one encodes the leader peptide, exons 2 and 3 encode the two extracellular domains, exon 4 encodes the transmembrane domain and exon 5 encodes the cytoplasmic tail. [provided by RefSeq, Jul 2008],

Immunohistochemical analysis of paraffin-embedded Human-tonsil, antibody was diluted at 1:100



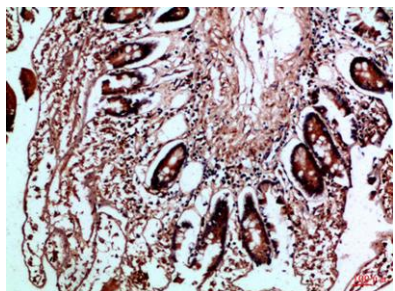
Immunohistochemical analysis of paraffin-embedded Human-tonsil, antibody was diluted at 1:100





ELK Biotechnology

Immunohistochemical analysis of paraffin-embedded
Human-colon, antibody was diluted at 1:100



+86-27-59760950

ELKbio@ELKbiotech.com

www.elkbiotech.com

23-2, No.388 Gaoxin 2nd Road,Wuhan East Lake Hi-tech Development Zone, Hubei , P.R.C