



# Tau (Acetyl Lys174) rabbit pAb

Cat No.:ES8765

For research use only

## Overview

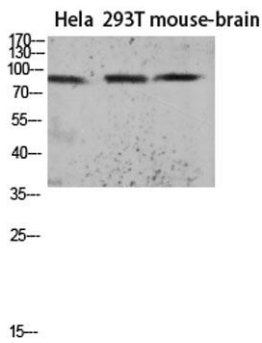
<b>Product Name</b>	Tau (Acetyl Lys174) rabbit pAb
<b>Host species</b>	Rabbit
<b>Applications</b>	WB; IF;ELISA
<b>Species Cross-Reactivity</b>	Human;Rat;Mouse
<b>Recommended dilutions</b>	WB 1:500-2000; IF/ICC 1:100-500;ELISA 1:5000-20000
<b>Immunogen</b>	Synthetic Acetyl peptide from human protein at AA range: 174
<b>Specificity</b>	The antibody detects endogenous Tau when Acetyl occurs at Lys174
<b>Formulation</b>	Liquid in PBS containing 50% glycerol, 0.5% BSA and 0.02% sodium azide.
<b>Storage</b>	Store at -20°C. Avoid repeated freeze-thaw cycles.
<b>Protein Name</b>	Microtubule-associated protein tau (Neurofibrillary tangle protein) (Paired helical filament-tau) (PHF-tau)
<b>Gene Name</b>	MAPT MAPTL MTBT1 TAU
<b>Cellular localization</b>	Cytoplasm, cytosol . Cell membrane ; Peripheral membrane protein ; Cytoplasmic side . Cytoplasm, cytoskeleton . Cell projection, axon . Cell projection, dendrite . Secreted . Mostly found in the axons of neurons, in the cytosol and in association with pla
<b>Purification</b>	The antibody was affinity-purified from rabbit antiserum by affinity-chromatography using epitope-specific immunogen.
<b>Clonality</b>	Polyclonal
<b>Concentration</b>	1 mg/ml
<b>Observed band</b>	50-85kD
<b>Human Gene ID</b>	4137
<b>Human Swiss-Prot Number</b>	P10636
<b>Alternative Names</b>	Microtubule-associated protein tau (Neurofibrillary tangle protein) (Paired helical filament-tau) (PHF-tau)





## Background

This gene encodes the microtubule-associated protein tau (MAPT) whose transcript undergoes complex, regulated alternative splicing, giving rise to several mRNA species. MAPT transcripts are differentially expressed in the nervous system, depending on stage of neuronal maturation and neuron type. MAPT gene mutations have been associated with several neurodegenerative disorders such as Alzheimer's disease, Pick's disease, frontotemporal dementia, cortico-basal degeneration and progressive supranuclear palsy. [provided by RefSeq, Jul 2008],



<---

Western blot analysis of KB Hela lysate, antibody was diluted at 1000. Secondary antibody(catalog#:RS0002) was diluted at 1:20000

