



PACAP rabbit pAb

Cat No.:ES8756

For research use only

Overview

Product Name	PACAP rabbit pAb
Host species	Rabbit
Applications	IHC;IF;ELISA
Species Cross-Reactivity	Human;Rat;Mouse;
Recommended dilutions	IHC-p 1:50-200, ELISA 1:10000-20000
Immunogen	Synthetic peptide from human protein at AA range: 1-50
Specificity	The antibody detects endogenous PACAP
Formulation	Liquid in PBS containing 50% glycerol, 0.5% BSA and 0.02% sodium azide.
Storage	Store at -20°C. Avoid repeated freeze-thaw cycles.
Protein Name	Plasma cell-induced resident endoplasmic reticulum protein (Plasma cell-induced resident ER protein) (pERp1) (Proapoptotic caspase adapter protein)
Gene Name	PACAP HSPC190
Cellular localization	[Isoform 1]: Endoplasmic reticulum lumen . Secreted .; [Isoform 2]: Cytoplasm . Diffuse granular localization in the cytoplasm surrounding the nucleus (PubMed:11350957).
Purification	The antibody was affinity-purified from rabbit antiserum by affinity-chromatography using epitope-specific immunogen.
Clonality	Polyclonal
Concentration	1 mg/ml
Observed band	
Human Gene ID	51237
Human Swiss-Prot Number	Q8WU39
Alternative Names	Plasma cell-induced resident endoplasmic reticulum protein (Plasma cell-induced resident ER protein;pERp1;Proapoptotic caspase adapter protein)
Background	function:May be involved in regulation of apoptosis.,induction:Down-regulated in primary

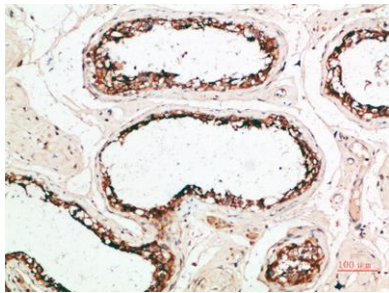




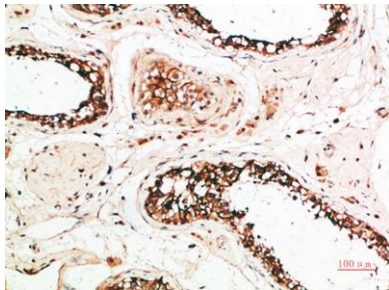
ELK Biotechnology

B-cells early after ligand-stimulated activation.,subcellular location:In (PubMed:11350957) diffuse granular localization in the cytoplasm surrounding the nucleus.,subunit:Isoform 2 interacts with CASP2 and CASP9.,tissue specificity:Widely expressed with highest levels in adult brain. Expression is frequently lower in intestinal-type gastric cancer.,

Immunohistochemical analysis of paraffin-embedded human-testis, antibody was diluted at 1:200



Immunohistochemical analysis of paraffin-embedded human-testis, antibody was diluted at 1:200



+86-27-59760950

ELKbio@ELKbiotech.com

www.elkbiotech.com

23-2, No.388 Gaoxin 2nd Road,Wuhan East Lake Hi-tech Development Zone, Hubei , P.R.C