



EPG5 rabbit pAb

Cat No.:ES8755

For research use only

Overview

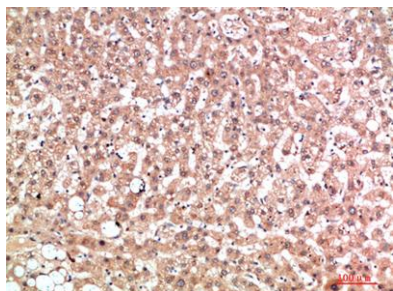
Product Name	EPG5 rabbit pAb
Host species	Rabbit
Applications	WB;IHC;IF
Species Cross-Reactivity	Human;Rat;Mouse;
Recommended dilutions	WB: 1:1000-2000 IHC: 1:200-500
Immunogen	Synthetic peptide from human protein at AA range: 141-190
Specificity	The antibody detects endogenous EPG5
Formulation	Liquid in PBS containing 50% glycerol, 0.5% BSA and 0.02% sodium azide.
Storage	Store at -20°C. Avoid repeated freeze-thaw cycles.
Protein Name	Ectopic P granules protein 5 homolog
Gene Name	EPG5 KIAA1632
Cellular localization	Cytoplasm, perinuclear region . Lysosome .
Purification	The antibody was affinity-purified from rabbit antiserum by affinity-chromatography using epitope-specific immunogen.
Clonality	Polyclonal
Concentration	1 mg/ml
Observed band	
Human Gene ID	57724
Human Swiss-Prot Number	Q9HCEO
Alternative Names	Ectopic P granules protein 5 homolog
Background	This gene encodes a large coiled coil domain-containing protein that functions in autophagy during starvation conditions. Mutations in this gene cause Vici syndrome. [provided by RefSeq, Aug 2015],



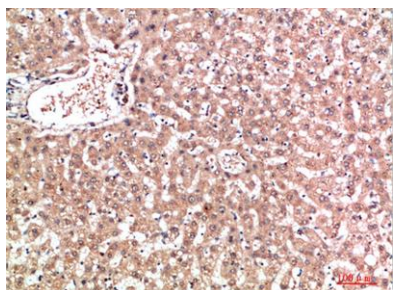


ELK Biotechnology

Immunohistochemical analysis of paraffin-embedded human-liver, antibody was diluted at 1:200



Immunohistochemical analysis of paraffin-embedded human-liver, antibody was diluted at 1:200



+86-27-59760950

ELKbio@ELKbiotech.com

www.elkbiotech.com

23-2, No.388 Gaoxin 2nd Road,Wuhan East Lake Hi-tech Development Zone, Hubei , P.R.C