



DLEU7 rabbit pAb

Cat No.:ES8744

For research use only

Overview

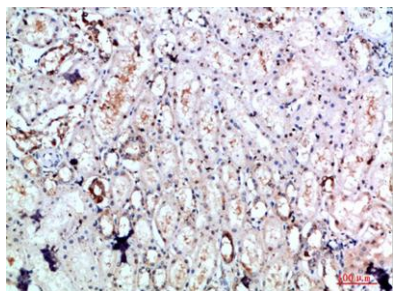
Product Name	DLEU7 rabbit pAb
Host species	Rabbit
Applications	IHC;IF;ELISA
Species Cross-Reactivity	Human;Rat;Mouse;
Recommended dilutions	IHC-p 1:50-200, ELISA 1:10000-20000
Immunogen	The antiserum was produced against synthesized peptide derived from the Internal region of human DLEU7. AA range:51-100
Specificity	The antibody detects endogenous DLEU7
Formulation	Liquid in PBS containing 50% glycerol, 0.5% BSA and 0.02% sodium azide.
Storage	Store at -20°C. Avoid repeated freeze-thaw cycles.
Protein Name	Leukemia-associated protein 7 (Deleted in lymphocytic leukemia 7)
Gene Name	DLEU7 LEU7
Cellular localization	
Purification	The antibody was affinity-purified from rabbit antiserum by affinity-chromatography using epitope-specific immunogen.
Clonality	Polyclonal
Concentration	1 mg/ml
Observed band	
Human Gene ID	220107
Human Swiss-Prot Number	Q6UYE1
Alternative Names	Leukemia-associated protein 7 (Deleted in lymphocytic leukemia 7)
Background	alternative products:Additional isoforms seem to exist,developmental stage:Expressed in the fetal brain, liver and kidney.,tissue specificity:Ubiquitous.,



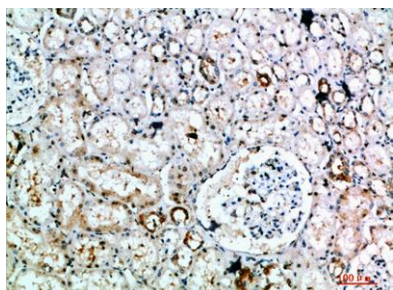


ELK Biotechnology

Immunohistochemical analysis of paraffin-embedded human-kidney, antibody was diluted at 1:200



Immunohistochemical analysis of paraffin-embedded human-kidney, antibody was diluted at 1:200



+86-27-59760950

ELKbio@ELKbiotech.com

www.elkbiotech.com

23-2, No.388 Gaoxin 2nd Road,Wuhan East Lake Hi-tech Development Zone, Hubei , P.R.C