



# BMP-1 rabbit pAb

Cat No.:ES8735

For research use only

## Overview

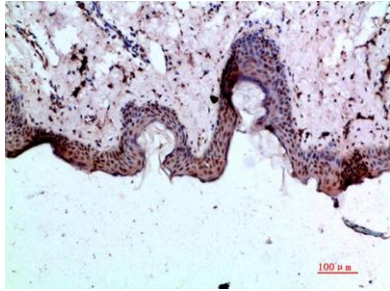
<b>Product Name</b>	BMP-1 rabbit pAb
<b>Host species</b>	Rabbit
<b>Applications</b>	IHC;IF;ELISA
<b>Species Cross-Reactivity</b>	Human;Mouse;Rat
<b>Recommended dilutions</b>	IHC-p 1:50-200, ELISA 1:10000-20000
<b>Immunogen</b>	Synthetic peptide from human protein at AA range: 131-180
<b>Specificity</b>	The antibody detects endogenous BMP-1
<b>Formulation</b>	Liquid in PBS containing 50% glycerol, 0.5% BSA and 0.02% sodium azide.
<b>Storage</b>	Store at -20°C. Avoid repeated freeze-thaw cycles.
<b>Protein Name</b>	Bone morphogenetic protein 1 (BMP-1) (EC 3.4.24.19) (Mammalian tolloid protein) (mTld) (Procollagen C-proteinase) (PCP)
<b>Gene Name</b>	BMP1 PCOLC
<b>Cellular localization</b>	Golgi apparatus, trans-Golgi network . Secreted, extracellular space, extracellular matrix . Secreted . Co-localizes with POSTN in the Golgi. .; [Isoform BMP1-3]: Secreted .
<b>Purification</b>	The antibody was affinity-purified from rabbit antiserum by affinity-chromatography using epitope-specific immunogen.
<b>Clonality</b>	Polyclonal
<b>Concentration</b>	1 mg/ml
<b>Observed band</b>	
<b>Human Gene ID</b>	649
<b>Human Swiss-Prot Number</b>	P13497
<b>Alternative Names</b>	Bone morphogenetic protein 1 (BMP-1;EC 3.4.24.19;Mammalian tolloid protein;mTld;Procollagen C-proteinase;PCP)
<b>Background</b>	This gene encodes a protein that is capable of inducing formation of cartilage in vivo. Although other bone morphogenetic proteins are members of





the TGF-beta superfamily, this gene encodes a protein that is not closely related to other known growth factors. This gene is expressed as alternatively spliced variants that share an N-terminal protease domain but differ in their C-terminal region. [provided by RefSeq, Aug 2008],

Immunohistochemical analysis of paraffin-embedded human-skin, antibody was diluted at 1:200



Immunohistochemical analysis of paraffin-embedded human-skin, antibody was diluted at 1:200

