



HDGF rabbit pAb

Cat No.:ES8731

For research use only

Overview

Product Name	HDGF rabbit pAb
Host species	Rabbit
Applications	IHC;IF;ELISA
Species Cross-Reactivity	Human;Rat;Mouse;
Recommended dilutions	IHC-p 1:50-200, ELISA 1:10000-20000
Immunogen	Synthetic peptide from human protein at AA range: 141-190
Specificity	The antibody detects endogenous HDGF
Formulation	Liquid in PBS containing 50% glycerol, 0.5% BSA and 0.02% sodium azide.
Storage	Store at -20°C. Avoid repeated freeze-thaw cycles.
Protein Name	Hepatoma-derived growth factor (HDGF) (High mobility group protein 1-like 2) (HMG-1L2)
Gene Name	HDGF HMG1L2
Cellular localization	[Isoform 1]: Nucleus . Cytoplasm . Secreted, extracellular exosome . Secreted by exosomes and is located inside the exosome (PubMed:27926477). May also be secreted as free protein via an as yet unknown pathway (PubMed:27926477). . ; [Isoform 2]: Nucleus . Cytoplasm . Secreted, extracellular exosome . Secreted by exosomes and is located on the outer exosome surface. . ; [Isoform 3]: Nucleus . Cytoplasm . Secreted, extracellular exosome . Secreted by exosomes and is located on the outer exosome surface. .
Purification	The antibody was affinity-purified from rabbit antiserum by affinity-chromatography using epitope-specific immunogen.
Clonality	Polyclonal
Concentration	1 mg/ml
Observed band	
Human Gene ID	3068
Human Swiss-Prot Number	P51858





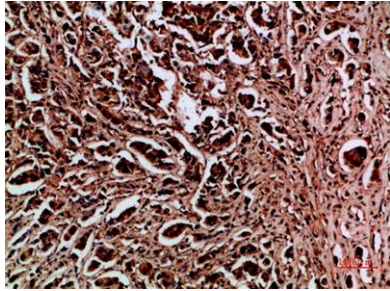
Alternative Names

Hepatoma-derived growth factor (HDGF;High mobility group protein 1-like 2;HMG-1L2)

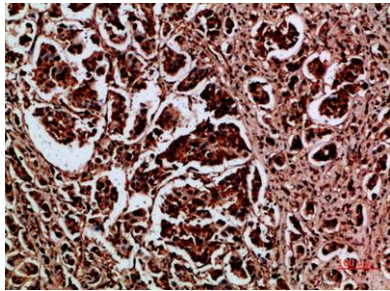
Background

This gene encodes a member of the hepatoma-derived growth factor family. The encoded protein has mitogenic and DNA-binding activity and may play a role in cellular proliferation and differentiation. High levels of expression of this gene enhance the growth of many tumors. This gene was thought initially to be located on chromosome X; however, that location has been determined to correspond to a related pseudogene. Alternatively spliced transcript variants encoding distinct isoforms have been described. [provided by RefSeq, Jan 2016],

Immunohistochemical analysis of paraffin-embedded human-breast-cancer, antibody was diluted at 1:200



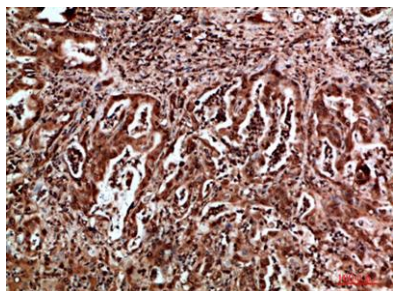
Immunohistochemical analysis of paraffin-embedded human-breast-cancer, antibody was diluted at 1:200



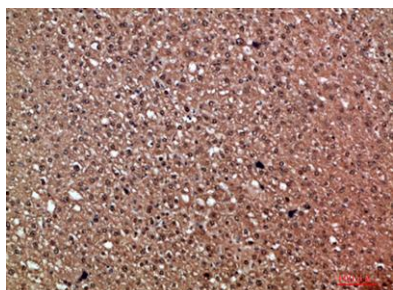


ELK Biotechnology

Immunohistochemical analysis of paraffin-embedded human-liver-cancer, antibody was diluted at 1:200



Immunohistochemical analysis of paraffin-embedded human-liver-cancer, antibody was diluted at 1:200



+86-27-59760950

ELKbio@ELKbiotech.com

www.elkbiotech.com

23-2, No.388 Gaoxin 2nd Road,Wuhan East Lake Hi-tech Development Zone, Hubei , P.R.C