



IL-1F6 rabbit pAb

Cat No.:ES8729

For research use only

Overview

Product Name	IL-1F6 rabbit pAb
Host species	Rabbit
Applications	IHC;IF;ELISA
Species Cross-Reactivity	Human;Rat;Mouse;
Recommended dilutions	IHC-p 1:50-200, ELISA 1:10000-20000
Immunogen	The antiserum was produced against synthesized peptide derived from the Internal region of human IL36A. AA range:21-70
Specificity	The antibody detects endogenous IL-1F6
Formulation	Liquid in PBS containing 50% glycerol, 0.5% BSA and 0.02% sodium azide.
Storage	Store at -20°C. Avoid repeated freeze-thaw cycles.
Protein Name	Interleukin-36 alpha (FIL1 epsilon) (Interleukin-1 epsilon) (IL-1 epsilon) (Interleukin-1 family member 6) (IL-1F6)
Gene Name	IL36A FIL1E IL1E IL1F6
Cellular localization	Cytoplasm . Secreted . The secretion is dependent on protein unfolding and facilitated by the cargo receptor TMED10; it results in protein translocation from the cytoplasm into the ERGIC (endoplasmic reticulum-Golgi intermediate compartment) followed by v
Purification	The antibody was affinity-purified from rabbit antiserum by affinity-chromatography using epitope-specific immunogen.
Clonality	Polyclonal
Concentration	1 mg/ml
Observed band	
Human Gene ID	27179
Human Swiss-Prot Number	Q9UHA7
Alternative Names	Interleukin-36 alpha (FIL1 epsilon;Interleukin-1 epsilon;IL-1 epsilon;Interleukin-1 family member 6;IL-1F6)

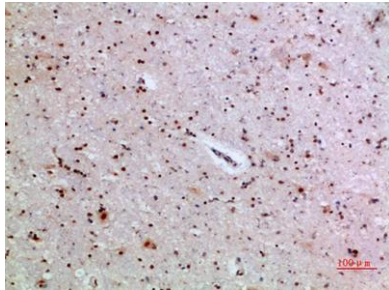




Background

The protein encoded by this gene is a cytokine that can activate NF-kappa-B and MAPK signaling pathways to generate an inflammatory response. The encoded protein functions primarily in skin and demonstrates increased expression in psoriasis. In addition, decreased expression of this gene has been linked to a poor prognosis in both hepatocellular carcinoma and colorectal cancer patients. [provided by RefSeq, Nov 2015],

Immunohistochemical analysis of paraffin-embedded human-brain, antibody was diluted at 1:200



Immunohistochemical analysis of paraffin-embedded human-brain, antibody was diluted at 1:200

