



CD231 rabbit pAb

Cat No.:ES8698

For research use only

Overview

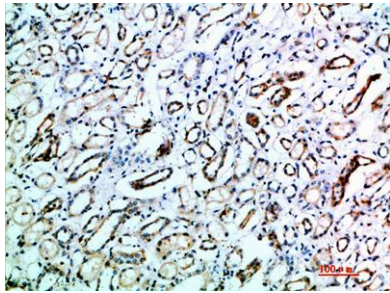
Product Name	CD231 rabbit pAb
Host species	Rabbit
Applications	IHC;IF;ELISA
Species Cross-Reactivity	Human;Mouse;Rat
Recommended dilutions	IHC-p 1:50-200, ELISA 1:10000-20000
Immunogen	Synthetic peptide from human protein at AA range: 101-150
Specificity	The antibody detects endogenous CD231
Formulation	Liquid in PBS containing 50% glycerol, 0.5% BSA and 0.02% sodium azide.
Storage	Store at -20°C. Avoid repeated freeze-thaw cycles.
Protein Name	Tetraspanin-7 (Tspan-7) (Cell surface glycoprotein A15) (Membrane component chromosome X surface marker 1) (T-cell acute lymphoblastic leukemia-associated antigen 1) (TALLA-1) (Transmembrane 4 superfa
Gene Name	TSPAN7 A15 DXS1692E MXS1 TM4SF2
Cellular localization	Membrane; Multi-pass membrane protein.
Purification	The antibody was affinity-purified from rabbit antiserum by affinity-chromatography using epitope-specific immunogen.
Clonality	Polyclonal
Concentration	1 mg/ml
Observed band	
Human Gene ID	7102
Human Swiss-Prot Number	P41732
Alternative Names	Tetraspanin-7 (Tspan-7;Cell surface glycoprotein A15;Membrane component chromosome X surface marker 1;T-cell acute lymphoblastic leukemia-associated antigen 1;TALLA-1;Transmembrane 4 superfamily member 2;CD antigen CD231)
Background	The protein encoded by this gene is a member of





the transmembrane 4 superfamily, also known as the tetraspanin family. Most of these members are cell-surface proteins that are characterized by the presence of four hydrophobic domains. The proteins mediate signal transduction events that play a role in the regulation of cell development, activation, growth and motility. This encoded protein is a cell surface glycoprotein and may have a role in the control of neurite outgrowth. It is known to complex with integrins. This gene is associated with X-linked mental retardation and neuropsychiatric diseases such as Huntington's chorea, fragile X syndrome and myotonic dystrophy. [provided by RefSeq, Jul 2008],

Immunohistochemical analysis of paraffin-embedded human-kidney, antibody was diluted at 1:200



Immunohistochemical analysis of paraffin-embedded human-brain, antibody was diluted at 1:200

