



PD-L2 rabbit pAb

Cat No.:ES8685

For research use only

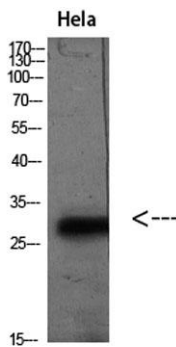
Overview

Product Name	PD-L2 rabbit pAb
Host species	Rabbit
Applications	WB;IHC;IF;ELISA
Species Cross-Reactivity	Human;Rat;Mouse;
Recommended dilutions	WB 1:500-2000,IHC-p 1:50-200, ELISA 1:10000-20000
Immunogen	Synthetic peptide from human protein at AA range: 31-80
Specificity	The antibody detects endogenous PD-L2
Formulation	Liquid in PBS containing 50% glycerol, 0.5% BSA and 0.02% sodium azide.
Storage	Store at -20°C. Avoid repeated freeze-thaw cycles.
Protein Name	Programmed cell death 1 ligand 2 (PD-1 ligand 2) (PD-L2) (PDCD1 ligand 2) (Programmed death ligand 2) (Butyrophilin B7-DC) (B7-DC) (CD antigen CD273)
Gene Name	PDCD1LG2 B7DC CD273 PDCD1L2 PDL2
Cellular localization	[Isoform 3]: Secreted .; [Isoform 2]: Endomembrane system ; Single-pass type I membrane protein .; [Isoform 1]: Cell membrane ; Single-pass type I membrane protein .
Purification	The antibody was affinity-purified from rabbit antiserum by affinity-chromatography using epitope-specific immunogen.
Clonality	Polyclonal
Concentration	1 mg/ml
Observed band	30kD
Human Gene ID	80380
Human Swiss-Prot Number	Q9BQ51
Alternative Names	Programmed cell death 1 ligand 2 (PD-1 ligand 2;PD-L2;PDCD1 ligand 2;Programmed death ligand 2;Butyrophilin B7-DC;B7-DC;CD antigen CD273)
Background	function:Involved in the costimulatory signal, essential for T-cell proliferation and IFNG production





in a PDCD1-independent manner. Interaction with PDCD1 inhibits T-cell proliferation by blocking cell cycle progression and cytokine production.,induction:Up-regulated by IFNG stimulation in monocytes and induced on dendritic cells grown from peripheral blood mononuclear cells with CSF2 and IL4.,similarity:Belongs to the immunoglobulin superfamily. BTN/MOG family.,similarity:Contains 1 Ig-like C2-type (immunoglobulin-like) domain.,similarity:Contains 1 Ig-like V-type (immunoglobulin-like) domain.,subunit:Interacts with PDCD1.,tissue specificity:Highly expressed in heart, placenta, pancreas, lung and liver and weakly expressed in spleen, lymph nodes and thymus.,



Western blot analysis of HeLa(TSA 400nM 24h) lysate, antibody was diluted at 2000. Secondary antibody(catalog#:RS0002) was diluted at 1:20000

Immunohistochemical analysis of paraffin-embedded Human-liver, antibody was diluted at 1:100

