



Endoglin rabbit pAb

Cat No.:ES8650

For research use only

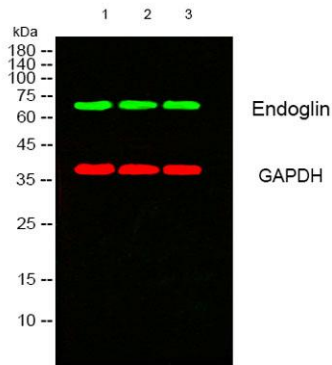
Overview

Product Name	Endoglin rabbit pAb
Host species	Rabbit
Applications	WB;IHC;IF;ELISA
Species Cross-Reactivity	Human;Rat;Mouse;
Recommended dilutions	WB 1:500-2000,IHC-p 1:500-200, ELISA 1:10000-20000
Immunogen	Synthetic peptide from human protein at AA range: 370-430
Specificity	The antibody detects endogenous Endoglin
Formulation	Liquid in PBS containing 50% glycerol, 0.5% BSA and 0.02% sodium azide.
Storage	Store at -20°C. Avoid repeated freeze-thaw cycles.
Protein Name	Endoglin (CD antigen CD105)
Gene Name	ENG END
Cellular localization	Cell membrane ; Single-pass type I membrane protein .
Purification	The antibody was affinity-purified from rabbit antiserum by affinity-chromatography using epitope-specific immunogen.
Clonality	Polyclonal
Concentration	1 mg/ml
Observed band	70kD
Human Gene ID	2022
Human Swiss-Prot Number	P17813
Alternative Names	Endoglin (CD antigen CD105)
Background	This gene encodes a homodimeric transmembrane protein which is a major glycoprotein of the vascular endothelium. This protein is a component of the transforming growth factor beta receptor complex and it binds to the beta1 and beta3 peptides with high affinity. Mutations in this gene cause hereditary hemorrhagic telangiectasia, also known as Osler-Rendu-Weber syndrome 1, an autosomal

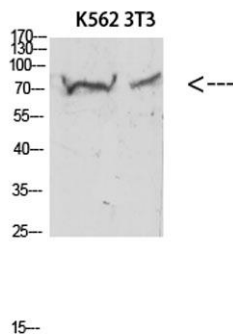




dominant multisystemic vascular dysplasia. This gene may also be involved in preeclampsia and several types of cancer. Alternatively spliced transcript variants encoding different isoforms have been found for this gene. [provided by RefSeq, May 2013],

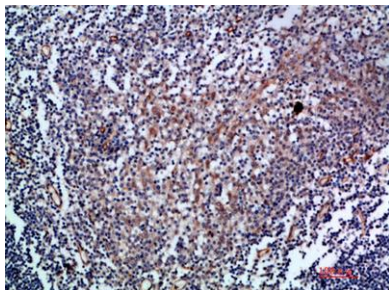


Western blot analysis of lysates from 1) 3T3 , 2) K562 , 3) HeLa cells, (Green) primary antibody was diluted at 1:1000, 4° over night, secondary antibody(cat:RS23920)was diluted at 1:10000, 37° 1hour. (Red) GAPDH Monoclonal Antibody(2B8) (cat:YM3029) anti



Western blot analysis of 3T3 KB K562 HeLa 293T lysate, antibody was diluted at 500. Secondary antibody(catalog#:RS0002) was diluted at 1:20000

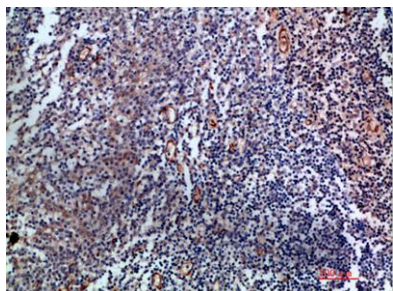
Immunohistochemical analysis of paraffin-embedded human-tonsil, antibody was diluted at 1:200





ELK Biotechnology

Immunohistochemical analysis of paraffin-embedded human-tonsil, antibody was diluted at 1:200



+86-27-59760950

ELKbio@ELKbiotech.com

www.elkbiotech.com

23-2, No.388 Gaoxin 2nd Road,Wuhan East Lake Hi-tech Development Zone, Hubei , P.R.C