



Cystatin A rabbit pAb

Cat No.:ES8644

For research use only

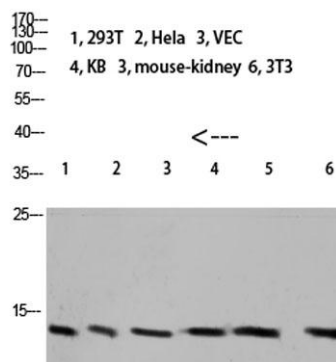
Overview

Product Name	Cystatin A rabbit pAb
Host species	Rabbit
Applications	WB;IHC;IF;ELISA
Species Cross-Reactivity	Human;Rat;Mouse;
Recommended dilutions	WB 1:500-2000,IHC-p 1:500-200, ELISA 1:10000-20000
Immunogen	Synthetic peptide from human protein at AA range: 60-98
Specificity	The antibody detects endogenous Cystatin A
Formulation	Liquid in PBS containing 50% glycerol, 0.5% BSA and 0.02% sodium azide.
Storage	Store at -20°C. Avoid repeated freeze-thaw cycles.
Protein Name	Cystatin-A (Cystatin-AS) (Stefin-A)
Gene Name	CSTA STF1 STFA
Cellular localization	Cytoplasm .
Purification	The antibody was affinity-purified from rabbit antiserum by affinity-chromatography using epitope-specific immunogen.
Clonality	Polyclonal
Concentration	1 mg/ml
Observed band	11kD
Human Gene ID	1475
Human Swiss-Prot Number	P01040
Alternative Names	Cystatin-A (Cystatin-AS;Stefin-A)
Background	The cystatin superfamily encompasses proteins that contain multiple cystatin-like sequences. Some of the members are active cysteine protease inhibitors, while others have lost or perhaps never acquired this inhibitory activity. There are three inhibitory families in the superfamily, including the type 1 cystatins (stefins), type 2 cystatins, and kininogens. This gene encodes a stefin that functions as a cysteine protease inhibitor, forming tight complexes



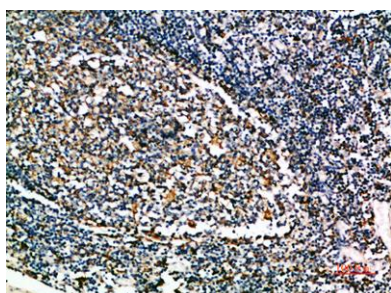


with papain and the cathepsins B, H, and L. The protein is one of the precursor proteins of cornified cell envelope in keratinocytes and plays a role in epidermal development and maintenance. Stefins have been proposed as prognostic and diagnostic tools for cancer. [provided by RefSeq, Jul 2008],

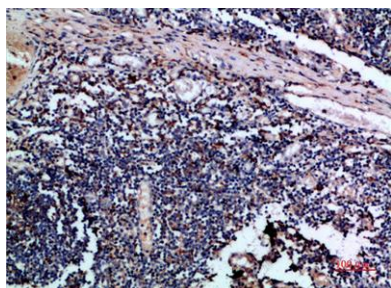


Western blot analysis of 293T mouse-kidney lysate, antibody was diluted at 1000. Secondary antibody(catalog#:RS0002) was diluted at 1:20000

Immunohistochemical analysis of paraffin-embedded human-tonsil, antibody was diluted at 1:200



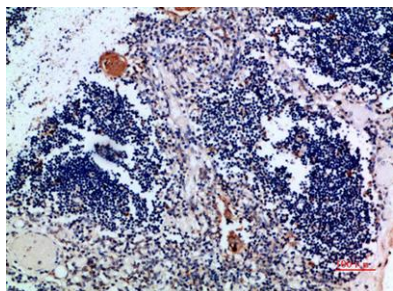
Immunohistochemical analysis of paraffin-embedded human-tonsil, antibody was diluted at 1:200





ELK Biotechnology

Immunohistochemical analysis of paraffin-embedded human-thymus, antibody was diluted at 1:200



+86-27-59760950

ELKbio@ELKbiotech.com

www.elkbiotech.com

23-2, No.388 Gaoxin 2nd Road,Wuhan East Lake Hi-tech Development Zone, Hubei , P.R.C