



PLK2 rabbit pAb

Cat No.:ES8601

For research use only

Overview

Product Name	PLK2 rabbit pAb
Host species	Rabbit
Applications	IHC;IF;ELISA
Species Cross-Reactivity	Human;Rat
Recommended dilutions	IHC-p 1:50-200, ELISA 1:10000-20000
Immunogen	Synthetic peptide from human protein at AA range: 377-451
Specificity	The antibody detects endogenous PLK2
Formulation	Liquid in PBS containing 50% glycerol, 0.5% BSA and 0.02% sodium azide.
Storage	Store at -20°C. Avoid repeated freeze-thaw cycles.
Protein Name	PLK2
Gene Name	PLK2 SNK
Cellular localization	Cytoplasm, cytoskeleton, microtubule organizing center, centrosome, centriole . Cell projection, dendrite . Localizes to centrosomes during early G1 phase where it only associates to the mother centriole and then distributes equally to both mother and dau
Purification	The antibody was affinity-purified from rabbit antiserum by affinity-chromatography using epitope-specific immunogen.
Clonality	Polyclonal
Concentration	1 mg/ml
Observed band	
Human Gene ID	10769
Human Swiss-Prot Number	Q9NYY3
Alternative Names	Serine/threonine-protein kinase PLK2 (EC 2.7.11.21;Polo-like kinase 2;PLK-2;hPlk2;Serine/threonine-protein kinase SNK;hSNK;Serum-inducible kinase)
Background	The protein encoded by this gene is a member of the polo family of serine/threonine protein kinases

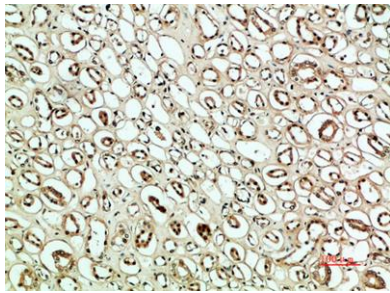




ELK Biotechnology

that have a role in normal cell division. This gene is most abundantly expressed in testis, spleen and fetal tissues, and its expression is inducible by serum, suggesting that it may also play an important role in cells undergoing rapid cell division. Alternatively spliced transcript variants encoding different isoforms have been found for this gene. [provided by RefSeq, Nov 2011],

Immunohistochemical analysis of paraffin-embedded human-kidney, antibody was diluted at 1:200



+86-27-59760950

ELKbio@ELKbiotech.com

www.elkbiotech.com

23-2, No.388 Gaoxin 2nd Road, Wuhan East Lake Hi-tech Development Zone, Hubei, P.R.C