



Corticotropin-releasing factor receptor 2 rabbit pAb

Cat No.:ES8600

For research use only

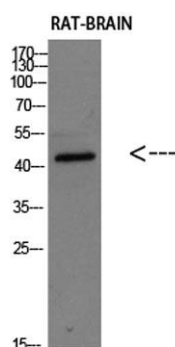
Overview

Product Name	Corticotropin-releasing factor receptor 2 rabbit pAb
Host species	Rabbit
Applications	WB;ELISA
Species Cross-Reactivity	Human;Rat
Recommended dilutions	WB 1:500-2000, ELISA 1:10000-20000
Immunogen	Synthetic peptide from human protein at AA range: 221-295
Specificity	The antibody detects endogenous Corticotropin-releasing factor receptor 2
Formulation	Liquid in PBS containing 50% glycerol, 0.5% BSA and 0.02% sodium azide.
Storage	Store at -20°C. Avoid repeated freeze-thaw cycles.
Protein Name	Corticotropin-releasing factor receptor 2
Gene Name	CRHR2 CRF2R CRH2R
Cellular localization	Cell membrane ; Multi-pass membrane protein .
Purification	The antibody was affinity-purified from rabbit antiserum by affinity-chromatography using epitope-specific immunogen.
Clonality	Polyclonal
Concentration	1 mg/ml
Observed band	48kD
Human Gene ID	1395
Human Swiss-Prot Number	Q13324
Alternative Names	Corticotropin-releasing factor receptor 2 (CRF-R-2) (CRF-R2) (CRFR-2) (Corticotropin-releasing hormone receptor 2) (CRH-R-2) (CRH-R2)
Background	The protein encoded by this gene belongs to the G-protein coupled receptor 2 family, and the subfamily of corticotropin releasing hormone receptor. This receptor shows high affinity for corticotropin releasing hormone (CRH), and also binds CRH-related peptides such as urocortin. CRH is





synthesized in the hypothalamus, and plays an important role in coordinating the endocrine, autonomic, and behavioral responses to stress and immune challenge. Studies in mice suggest that this receptor maybe involved in mediating cardiovascular homeostasis. Alternatively spliced transcript variants encoding different isoforms have been described for this gene.[provided by RefSeq, Jan 2011],



Western blot analysis of RAT-BRAIN Cell Lysate, antibody was diluted at 1:1000. Secondary antibody(catalog#:RS0002) was diluted at 1:20000

